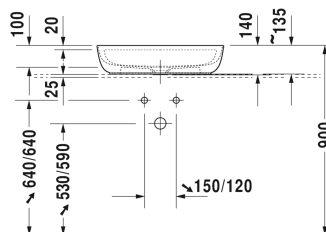
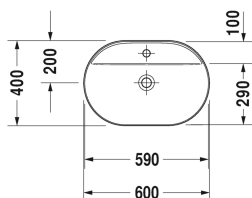


Wash bowl # 038060..00

| < 600 mm > |



| Wash bowl | Dimension | Weight | Order number |
|--|---------------|-----------|--------------|
| ground, without overflow, with tap platform, ceramic covered continuous flow waste waste included, fixings included, 600 mm | | | |
| Colors | | | |
| 00 White Alpin 21 Sand Satin matt 23 Grey Satin matt 26 White Satin matt | | | |
| Variant | | | |
| ● inner basin White, outer basin White | 600 x 400 mm | 10.300 kg | 038060..00 |
| Infobox | | | |
| Made from DuraCeram, * When using this siphon please observe outlet height from upper surface of finished floor to centre of outlet in accordance with the technical specification sheet | | | |
| Sanitary ceramics with the special WonderGliss surface finish will remain clean and attractive-looking for a long time to come. When ordering WonderGliss please add a "1" as eleventh digit to the model number. | | | |
| Accessory | | | |
| Design Siphon | | 1.500 kg | 005036 |
| Suitable products | | | |
| Vanity unit wall-mounted 1 pull-out compartment, countertop including one cut-out, for 1 above counter basin central, 800 x 550 mm | 800 x 550 mm | | KT6694 |
| Vanity unit wall-mounted 1 pull-out compartment, countertop including one cut-out, for 1 above counter basin central, 1000 x 550 mm | 1000 x 550 mm | | KT6695 |
| Vanity unit wall-mounted 1 pull-out compartment, countertop including one cut-out, for 1 above counter basin central, 1200 x 550 mm | 1200 x 550 mm | | KT6696 |
| Vanity unit wall-mounted 2 pull-out compartments, 1 countertop with one cut-out or two cut-outs, for 1 or 2 above counter basins, 1400 x 550 mm | 1400 x 550 mm | | KT6697 B/L/R |

Wash bowl # 038060..00

| < 600 mm > |

| | | |
|---|---------------|--------------|
| Vanity unit wall-mounted 2 drawers, upper drawer including cut-out for siphon and siphon cover, countertop including one cut-out, for 1 above counter basin central, 800 x 550 mm | 800 x 550 mm | KT6654 |
| Vanity unit wall-mounted 2 drawers, upper drawer including cut-out for siphon and siphon cover, countertop including one cut-out, for 1 above counter basin central, 1000 x 550 mm | 1000 x 550 mm | KT6655 |
| Vanity unit wall-mounted 2 drawers, upper drawer including cut-out for siphon and siphon cover, countertop including one cut-out, for 1 above counter basin central, 1200 x 550 mm | 1200 x 550 mm | KT6656 |
| Vanity unit wall-mounted 4 drawers, 1 countertop with one cut-out or two cut-outs, drawer beneath basin including cut-out for siphon and siphon cover, for 1 or 2 above counter basins, 1400 x 550 mm | 1400 x 550 mm | KT6657 B/L/R |
| Console including drawer for vanity basin countertop including one cut-out, 1 drawer beneath console, 1 cover beneath console, 3 console supports, 1800 x 565 mm | 1800 x 565 mm | DL6892 L/R |
| Console including drawer for wash bowls 1 countertop including one central cut-out, 1 drawer beneath console, 2 console supports, 600 x 565 mm | 600 x 565 mm | DL6787 |
| Console including drawer for wash bowls 1 countertop including one central cut-out, 1 drawer beneath console, 2 console supports, 800 x 565 mm | 800 x 565 mm | DL6788 |
| Console including drawer for wash bowls 1 countertop including one central cut-out, 1 drawer beneath console, 2 console supports, 1000 x 565 mm | 1000 x 565 mm | DL6789 |
| Console including drawer for wash bowls 1 countertop including one central cut-out, 1 drawer beneath console, 3 console supports, 1200 x 565 mm | 1200 x 565 mm | DL6790 |
| Console including drawer for wash bowls countertop including one cut-out, 2 drawers beneath console, 3 console supports, 1500 x 565 mm | 1500 x 565 mm | DL6791 L/R |
| Console including drawer for wash bowls countertop including one cut-out, 2 drawers beneath console, 3 console supports, 1800 x 565 mm | 1800 x 565 mm | DL6792 L/R |
| Vanity unit for console 2 drawers, upper drawer including cut-out for siphon and siphon cover, 800 x 565 mm | 800 x 565 mm | DL6799 |
| Vanity unit for console 1 pull-out compartment, compartment consists of glass dividers and 2 boxes (small/large), 600 x 478 mm | 600 x 478 mm | XL6500 |
| Vanity unit for console 1 pull-out compartment, compartment consists of glass dividers and 2 boxes (small/large), 800 x 478 mm | 800 x 478 mm | XL6501 |
| Vanity unit for console 1 pull-out compartment, compartment consists of glass dividers and 2 boxes (small/large), 1000 x 478 mm | 1000 x 478 mm | XL6502 |
| Vanity unit for console 2 drawers, upper drawer including cut-out for siphon and siphon cover, 600 x 478 mm | 600 x 478 mm | XL6510 |
| Vanity unit for console 2 drawers, upper drawer including cut-out for siphon and siphon cover, 800 x 478 mm | 800 x 478 mm | XL6511 |
| Vanity unit for console 2 drawers, upper drawer including cut-out for siphon and siphon cover, 1000 x 478 mm | 1000 x 478 mm | XL6512 |

Wash bowl # 038060..00

| < 600 mm > |

| | | |
|---|---------------|--------|
| Vanity unit for console 1 pull-out compartment, compartment consists of glass dividers and 2 boxes (small/large), 600 x 548 mm | 600 x 548 mm | XL6719 |
| Vanity unit for console 1 pull-out compartment, compartment consists of glass dividers and 2 boxes (small/large), 800 x 548 mm | 800 x 548 mm | XL6713 |
| Vanity unit for console 1 pull-out compartment, compartment consists of glass dividers and 2 boxes (small/large), 1000 x 548 mm | 1000 x 548 mm | XL6715 |
| Vanity unit for console 2 drawers, upper drawer including cut-out for siphon and siphon cover, 600 x 548 mm | 600 x 548 mm | XL6717 |
| Vanity unit for console 2 drawers, upper drawer including cut-out for siphon and siphon cover, 800 x 548 mm | 800 x 548 mm | XL6714 |
| Vanity unit for console 2 drawers, upper drawer including cut-out for siphon and siphon cover, 1000 x 548 mm | 1000 x 548 mm | XL6716 |
| Vanity unit for console 1 opened compartment including glass shelf, 800 x 548 mm | 800 x 548 mm | XL6718 |
| Vanity unit for console 2 drawers, upper drawer including cut-out for siphon and siphon cover, 600 x 478 mm | 600 x 478 mm | H26310 |
| Vanity unit for console 2 drawers, upper drawer including cut-out for siphon and siphon cover, 800 x 478 mm | 800 x 478 mm | H26311 |
| Vanity unit for console 2 drawers, upper drawer including cut-out for siphon and siphon cover, 1000 x 478 mm | 1000 x 478 mm | H26312 |
| Vanity unit for console 2 drawers, upper drawer including cut-out for siphon and siphon cover, 800 x 548 mm | 800 x 548 mm | H26301 |
| Vanity unit for console 2 drawers, upper drawer including cut-out for siphon and siphon cover, 600 x 548 mm | 600 x 548 mm | H26300 |
| Vanity unit for console 2 drawers, upper drawer including cut-out for siphon and siphon cover, 1000 x 548 mm | 1000 x 548 mm | H26302 |
| Vanity unit for console 1 open compartment including towel rail, 600 x 518 mm | 600 x 518 mm | VE6540 |
| Vanity unit for console 1 open compartment including towel rail, 800 x 518 mm | 800 x 518 mm | VE6541 |
| Vanity unit for console 1 open compartment including towel rail, 1000 x 518 mm | 1000 x 518 mm | VE6542 |
| Vanity unit for console 2 drawers, upper drawer including cut-out for siphon and siphon cover, 1000 x 565 mm | 1000 x 565 mm | DL6798 |
| Vanity unit for console 1 pull-out compartment, 520 x 477 mm | 520 x 477 mm | LC6810 |
| Vanity unit for console 1 pull-out compartment, 620 x 477 mm | 620 x 477 mm | LC6811 |
| Vanity unit for console 1 pull-out compartment, 820 x 477 mm | 820 x 477 mm | LC6812 |
| Vanity unit for console 1 pull-out compartment, 1020 x 477 mm | 1020 x 477 mm | LC6813 |
| Vanity unit for console with 2 drawers, upper drawer including cut-out for siphon and siphon cover, 520 x 477 mm | 520 x 477 mm | LC6820 |
| Vanity unit for console with 2 drawers, upper drawer including cut-out for siphon and siphon cover, 620 x 477 mm | 620 x 477 mm | LC6821 |

Wash bowl # 038060..00

|< 600 mm >|

| | | |
|--|---------------|------------|
| Vanity unit for console with 2 drawers, upper drawer including cut-out for siphon and siphon cover, 820 x 477 mm | 820 x 477 mm | LC6822 |
| Vanity unit for console with 2 drawers, upper drawer including cut-out for siphon and siphon cover, 1020 x 477 mm | 1020 x 477 mm | LC6823 |
| Vanity unit for console 1 pull-out compartment, 520 x 547 mm | 520 x 547 mm | LC6826 |
| Vanity unit for console 1 pull-out compartment, 620 x 547 mm | 620 x 547 mm | LC6827 |
| Vanity unit for console 1 pull-out compartment, 820 x 547 mm | 820 x 547 mm | LC6828 |
| Vanity unit for console 1 pull-out compartment, 1020 x 547 mm | 1020 x 547 mm | LC6829 |
| Vanity unit for console with 2 drawers, upper drawer including cut-out for siphon and siphon cover, 520 x 547 mm | 520 x 547 mm | LC6836 |
| Vanity unit for console with 2 drawers, upper drawer including cut-out for siphon and siphon cover, 620 x 547 mm | 620 x 547 mm | LC6837 |
| Vanity unit for console with 2 drawers, upper drawer including cut-out for siphon and siphon cover, 820 x 547 mm | 820 x 547 mm | LC6838 |
| Vanity unit for console with 2 drawers, upper drawer including cut-out for siphon and siphon cover, 1020 x 547 mm | 1020 x 547 mm | LC6839 |
| Vanity unit floor-standing 1 pull-out compartment, 1338 x 570 mm | 1338 x 570 mm | LU9561 |
| Vanity unit floor-standing 2 pull-out compartments, 1733 x 570 mm | 1733 x 570 mm | LU9562 B |
| Vanity unit floor-standing 2 pull-out compartments, 1733 x 570 mm | 1733 x 570 mm | LU9563 L/R |
| Vanity unit floor-standing 1 pull-out compartment, 638 x 450 mm | 638 x 450 mm | LU9560 |
| Vanity unit floor-standing 1 drawer, 1 pull-out compartment, upper drawer including cut-out for siphon and siphon cover, 638 x 450 mm | 638 x 450 mm | LU9565 |
| Vanity unit floor-standing 1 drawer, 1 pull-out compartment, upper drawer including cut-out for siphon and siphon cover, 1338 x 570 mm | 1338 x 570 mm | LU9566 |
| Vanity unit floor-standing 2 drawers, 2 pull-out compartments, 1733 x 570 mm | 1733 x 570 mm | LU9568 L/R |

All drawings contain the necessary measurements which are subject to standard tolerances. Exact measurements, in particular for customised installation scenarios, can only be taken from the finished ceramic piece.