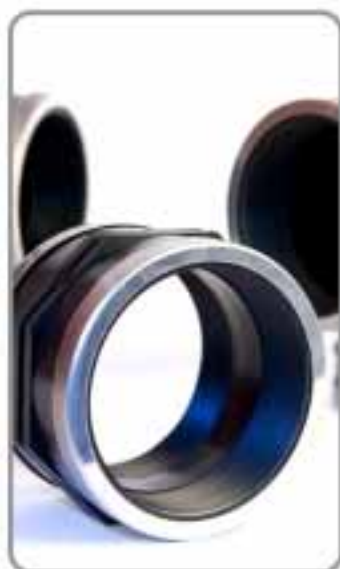




PLASTICA ALFA




RACCORDI
FITTINGS

2012

Plastica Alfa

Qu@lity point



 Il punto focale su cui da anni ormai si concentra la nostra attenzione è la gestione della Qualità, intesa non solo come un sistema di norme internazionali, le **ISO 9001 e 14001**, secondo le quali lavoriamo ed organizziamo la nostra produzione, ma soprattutto come un sistema di riferimento costante a garanzia del nostro impegno per il Miglioramento Continuo. Dal 1994 la scommessa della Certificazione di Qualità è stata vinta con questo spirito: farne leva competitiva in modo da assicurare ai nostri clienti la massima trasparenza e responsabilità nei processi produttivi, approvvigionativi e logistici. Abbiamo reso tutto ciò tangibile grazie ad

un'attenta **Politica per la Qualità** e per il **rispetto dell'Ambiente** e grazie ad una sicura tracciabilità dei nostri prodotti. Tutte i nostri prodotti sono integralmente **MADE IN ITALY**: pensati, fabbricati, controllati e assemblati con materiali e metodi italiani.

 Since a long time our focal point is the Quality Management, intended not only as a system of international standards, **ISO 9001 and 14001** according to which we work and arrange production, but above all as a system of reference that guarantees our commitment for a continuous improvement.

In 1994 we won the bet of the Quality Certification with this spirit: make it a competitive arm so as to assure our clients of the maximum transparency and responsibility in the production, procurement and logistic process. We have made this tangible thanks to a careful **Policy for Quality and respect of the Environment** besides sure procedures of product tracking. All Plastica Alfa products are wholly **MADE IN ITALY**: designed, built, tested and assembled with Italian materials and methods only.



index

3-8



BLU LINE PLUS

Raccordi a compressione BluLine PLUS
Blu Line PLUS compression fittings
Raccords á compresión Blu Line PLUS
Accesorios de compresión Blu Line PLUS

9-13



Blu Line

Raccordi a compressione BluLine
Blu Line compression fittings
Raccords á compresión Blu Line
Accesorios de compresión Blu Line

NEW

14



Valvole con raccordo a compressione

Compression Ball Valve
Vanne à bille avec raccord à compression
Valvula de bola con junta de compresión

15-19



Black Line

Raccordi a compressione Black Line
Black Line compression fittings
Raccords á compresión Black Line
Accesorios de compresión Black Line

20



Attrezzature

Tool
Herramientas
Équipements

Prese a staffa

Clamp saddles
Colliers de prise
Collarines de toma



21-25

Prese a staffa in pollici

IPS clamp saddle
Collier de prise selon IPS
Collarín de toma IPS



26

Raccordi filettati

Threaded fittings
Raccords filetés
Accesorios roscados



27-30

ALFA
RAPID
system



31-33

Raccordi in PE

PE fittings
Raccords en PE
Accesorios PE



34-39



WWW.PLASTICALFA.IT

comunicazione@plasticalfa.it

BLULINE PLUS

Compression fittings



caratteristiche tecniche technical features

| | |
|---|---|
| Corpo Body | Polipropilene nero (PP) Black Polypropylene (PP) |
| Ghiera Nut | Polipropilene blu (PP) Blue Polypropylene (PP) |
| Anello di Graffaggio Clinching Ring | Resina acetatica (POM) Acetal resin (POM) |
| Anello di spinta Thrust ring | Polipropilene nero (PP) Black Polypropylene (PP) |
| Anello di rinforzo Reinforcing ring | Acciaio inox "AISI 430" Stainless steel "AISI 430" |
| Guarnizione Gasket | Gomma nitrilica nera (NBR) Black nitrile rubber (NBR) |
| Pressione di esercizio ammmissibile PFA (PN) Allowable operating pressure | $\varnothing 16 - \varnothing 125 - 16$ $\varnothing 3''$ Fil. Fem./Female thread 10 $\varnothing 4''$ Fil. Fem./Female thread |
| Conformità Conformity | UNI 9561, UNI EN 712, UNI EN 713, UNI EN 715, ISO 14236, UNI EN 10226-1,-2 ANSI/ASME B1.20.1 - UNI EN 1092-1 ANSI/AWWA C 606-87 |

Prodotti idonei al convogliamento di acqua potabile e fluidi alimentari. Conformi a quanto richiesto dal DM 23/04/2009, DM 174 del 6/04/2004 (ex DM 21/3/73) e Reg. UE n° 10/2011. Pieces qualified to the conveyance of drinking water and alimentary fluids. In conformity with as required in the DM 23/04/2009 and DM 174 del 6/042004 (ex DM 21/3/73) and Reg. UE n° 10/2011.



53910

Manicotta

Coupling
Manchon
Manguito

| Misura/Size | Busta/Bag | Scatola/Box | Euro Price |
|-------------|-----------|-------------|------------|
| 20 | 20 | 220 | 3,05 |
| 25 | 10 | 150 | 3,60 |
| 32 | 10 | 80 | 4,65 |
| 40 | 5 | 60 | 7,60 |
| 50 | 5 | 30 | 10,40 |
| 63 | - | 20 | 14,35 |
| 75 | - | 14 | 27,10 |
| 90 | - | 8 | 39,30 |
| 110 | - | 5 | 71,75 |
| 125 | - | 3 | 168,00 |



53920

Manicotta ridotta

Reducing coupling
Manchon réduit
Manguito reducido

| Misura/Size | Busta/Bag | Scatola/Box | Euro Price |
|-------------|-----------|-------------|------------|
| 25 - 20 | 10 | 180 | 3,30 |
| 32 - 20 | 10 | 120 | 4,20 |
| 32 - 25 | 10 | 110 | 4,20 |
| 40 - 32 | 10 | 70 | 7,40 |
| 50 - 32 | 5 | 45 | 9,60 |
| 50 - 40 | 5 | 40 | 9,60 |
| 63 - 32 | - | 38 | 13,60 |
| 63 - 40 | - | 33 | 13,60 |
| 63 - 50 | - | 30 | 13,60 |
| 75 - 50 | - | - | 24,75 |
| 75 - 63 | - | 15 | 24,75 |
| 90 - 63 | - | 12 | 35,95 |
| 90 - 75 | - | 12 | 35,95 |
| 110 - 75 | - | 6 | 75,30 |
| 110 - 90 | - | - | 75,30 |



55910

Raccordo maschio

Male adaptor
Raccord male
Enlace macho

| Misura/Size | Busta/Bag | Scatola/Box | Euro Price |
|-------------|-----------|-------------|------------|
| 20 x 1/2" | 20 | 300 | 1,75 |
| 20 x 3/4" | 20 | 300 | 1,75 |
| 25 x 1/2" | 20 | 240 | 2,05 |
| 25 x 3/4" | 20 | 240 | 2,05 |
| 25 x 1" | 20 | 200 | 2,05 |
| 32 x 1/2" | 10 | 150 | 2,55 |
| 32 x 3/4" | 10 | 150 | 2,55 |
| 32 x 1" | 10 | 150 | 2,55 |
| 32 x 1 1/4" | 10 | 150 | 2,70 |
| 40 x 1" | 10 | 80 | 4,75 |
| 40 x 1 1/4" | 10 | 80 | 4,75 |
| 40 x 1 1/2" | 5 | 80 | 4,75 |
| 50 x 1 1/2" | 5 | 50 | 6,20 |
| 50 x 2" | 5 | 50 | 6,20 |
| 63 x 1 1/2" | - | 40 | 8,80 |
| 63 x 2" | - | 36 | 8,80 |
| 63 x 2 1/2" | - | 35 | 8,80 |
| 75 x 2" | - | 24 | 17,55 |
| 75 x 2 1/2" | - | 24 | 17,55 |
| 75 x 3" | - | 24 | 17,55 |
| 90 x 2" | - | - | 22,80 |
| 90 x 2 1/2" | - | - | 22,80 |
| 90 x 3" | - | 13 | 22,80 |
| 90 x 4" | - | - | 22,80 |
| 110 x 3" | - | 7 | 39,10 |
| 110 x 4" | - | 7 | 39,10 |
| 125 x 4" | - | 6 | 106,70 |
| 125 x 5" | - | 6 | 106,70 |



55920

Raccordo femmina

Female adaptor
Raccord femelle
Enlace hembra

| Misura/Size | Busta/Bag | Scatola/Box | Euro Price |
|-------------|-----------|-------------|------------|
| 20 x 1/2" | 20 | 300 | 2,00 |
| 20 x 3/4" | 20 | 300 | 2,00 |
| 25 x 1/2" | 20 | 220 | 2,35 |
| 25 x 3/4" | 20 | 220 | 2,35 |
| 25 x 1" | 20 | 200 | 2,35 |
| 32 x 3/4" | 10 | 150 | 2,85 |
| 32 x 1" | 10 | 150 | 2,85 |
| 40 x 1" | 10 | 70 | 4,95 |
| 40 x 1 1/4" | 10 | 70 | 4,95 |
| 40 x 1 1/2" | 10 | 70 | 4,95 |
| 50 x 1 1/2" | 5 | 50 | 6,50 |
| 50 x 2" | 5 | 45 | 6,50 |
| 63 x 1 1/2" | - | 40 | 9,20 |
| 63 x 2" | - | 38 | 9,20 |
| 75 x 2" | - | 24 | 18,45 |
| 75 x 2 1/2" | - | 24 | 18,45 |
| 75 x 3" | - | - | 18,45 |
| 90 x 3" | - | 12 | 26,75 |
| 110 x 3" | - | 7 | 49,35 |
| 110 x 4" | - | 7 | 49,35 |



56950

Gomito a 90°

90° elbow
Coude à 90°
Codo 90°

| Misura/Size | Busta/Bag | Scatola/Box | Euro Price |
|-------------|-----------|-------------|------------|
| 20 | 20 | 200 | 3,05 |
| 25 | 20 | 140 | 3,70 |
| 32 | 10 | 80 | 4,60 |
| 40 | 5 | 50 | 8,00 |
| 50 | 4 | 32 | 11,15 |
| 63 | - | 18 | 11,80 |
| 75 | - | 10 | 26,30 |
| 90 | - | 8 | 34,65 |
| 110 | - | 10 | 67,70 |



56935

Gomito a 90° filettato femmina

90° female threaded elbow
Coude à 90° taraudé
Codo 90° hembra

| Misura/Size | Busta/Bag | Scatola/Box | Euro Price |
|-------------|-----------|-------------|------------|
| 20 x 1/2" | 20 | 320 | 2,50 |
| 20 x 3/4" | 20 | 320 | 2,50 |
| 25 x 1/2" | 20 | 240 | 3,05 |
| 25 x 3/4" | 20 | 200 | 3,05 |
| 25 x 1" | 20 | 200 | 3,05 |
| 32 x 3/4" | 10 | 140 | 3,75 |
| 32 x 1" | 10 | 140 | 3,75 |
| 40 x 1" | 5 | 80 | 6,55 |
| 40 x 1 1/4" | 5 | 60 | 6,55 |
| 50 x 1 1/2" | 5 | 45 | 9,15 |
| 50 x 2" | - | 42 | 9,15 |
| 63 x 2" | - | 30 | 11,15 |
| 75 x 2" | - | 18 | 22,85 |
| 75 x 2 1/2" | - | 18 | 22,85 |
| 90 x 2 1/2" | - | - | 30,15 |
| 90 x 3" | - | 10 | 30,15 |
| 110 x 3" | - | - | 58,90 |
| 110 x 4" | - | 6 | 58,90 |



56925

Gomito a 90° filettato maschio

90° male threaded elbow
Coude à 90° fileté
Codo 90° macho

| Misura/Size | Busta/Bag | Scatola/Box | Euro Price |
|-------------|-----------|-------------|------------|
| 20 x 1/2" | 20 | 340 | 1,70 |
| 20 x 3/4" | 20 | 340 | 1,70 |
| 25 x 1/2" | 20 | 240 | 2,50 |
| 25 x 3/4" | 20 | 240 | 2,50 |
| 25 x 1" | 20 | 240 | 2,50 |
| 32 x 3/4" | 10 | 140 | 3,15 |
| 32 x 1" | 10 | 120 | 2,15 |
| 32 x 1 1/4" | 10 | 120 | 2,15 |
| 40 x 1" | 10 | 80 | 5,45 |
| 40 x 1 1/4" | 5 | 80 | 5,45 |
| 40 x 1 1/2" | 5 | 80 | 5,45 |
| 40 x 2" | - | 70 | 6,00 |
| 50 x 1 1/4" | 5 | 50 | 7,60 |
| 50 x 1 1/2" | 5 | 50 | 7,60 |
| 50 x 2" | - | 50 | 7,60 |
| 63 x 1 1/2" | - | 30 | 9,20 |
| 63 x 2" | - | 30 | 9,20 |
| 63 x 2 1/2" | - | - | 9,20 |
| 75 x 2" | - | 20 | 20,25 |
| 75 x 2 1/2" | - | 18 | 20,25 |
| 75 x 3" | - | 18 | 20,25 |
| 90 x 3" | - | 10 | 26,70 |
| 90 x 4" | - | - | 26,70 |
| 110 x 4" | - | 6 | 52,15 |



54910

Tee a 90°

90° tee
Té à 90°
Te 90°

| Misura/Size | Busta/Bag | Scatola/Box | Euro Price |
|-------------|-----------|-------------|------------|
| 20 | 20 | 120 | 3,95 |
| 25 | 10 | 80 | 5,20 |
| 32 | 5 | 50 | 6,80 |
| 40 | 5 | 30 | 11,15 |
| 50 | - | 20 | 15,15 |
| 63 | - | 12 | 27,50 |
| 75 | - | 7 | 38,85 |
| 90 | - | 6 | 64,80 |
| 110 | - | 6 | 99,65 |



54920

Tee a 90° ridotto

90° reducing tee
Té à 90° réduit
Te 90° reducida

| Misura/Size | Busta/Bag | Scatola/Box | Euro Price |
|----------------|-----------|-------------|------------|
| 20 - 25 - 20 | - | - | 5,10 |
| 25 - 20 - 25 | 10 | 100 | 5,80 |
| 32 - 25 - 32 | 5 | 60 | 6,60 |
| 40 - 32 - 40 | - | 35 | 11,15 |
| 50 - 25 - 50 | - | 25 | 16,45 |
| 50 - 32 - 50 | - | 25 | 16,45 |
| 50 - 40 - 50 | - | 25 | 16,45 |
| 63 - 25 - 63 | - | 16 | 19,95 |
| 63 - 32 - 63 | - | 16 | 18,95 |
| 63 - 40 - 63 | - | 15 | 19,95 |
| 63 - 50 - 63 | - | 14 | 19,95 |
| 75 - 63 - 75 | - | - | 37,50 |
| 90 - 75 - 90 | - | - | 64,60 |
| 110 - 90 - 110 | - | - | 104,80 |



54940

Tee a 90° filettata femmina

90° female threaded tee
Té à 90° taraudé
Te 90° hembra

| Misura/Size | Busta/Bag | Scatola/Box | Euro Price |
|-------------|-----------|-------------|------------|
| 20 x 1/2" | 20 | 160 | 3,55 |
| 20 x 3/4" | 20 | 160 | 3,55 |
| 25 x 1/2" | 10 | 120 | 4,65 |
| 25 x 3/4" | 10 | 100 | 4,65 |
| 25 x 1" | 10 | 100 | 4,65 |
| 32 x 3/4" | 10 | 60 | 6,15 |
| 32 x 1" | 10 | 60 | 6,15 |
| 40 x 1" | 5 | 40 | 10,05 |
| 40 x 1"1/4 | 5 | 45 | 10,05 |
| 40 x 1"1/2 | - | 40 | 10,05 |
| 50 x 1"1/4 | - | 24 | 13,65 |
| 50 x 1"1/2 | - | 24 | 13,65 |
| 50 x 2" | - | 20 | 13,65 |
| 63 x 2" | - | 16 | 24,75 |
| 75 x 2" | - | 10 | 35,70 |
| 75 x 2"1/2 | - | 10 | 35,70 |
| 75 x 3" | - | - | 35,70 |
| 90 x 3" | - | 6 | 59,65 |
| 90 x 4" | - | - | 59,65 |
| 110 x 3" | - | 8 | 91,65 |
| 110 x 4" | - | 8 | 91,65 |



54930

Tee a 90° filettato maschio

90° male threaded tee
Té à 90° fileté
Te 90° macho

| Misura/Size | Busta/Bag | Scatola/Box | Euro Price |
|-------------|-----------|-------------|------------|
| 20 x 1/2" | 20 | 180 | 3,35 |
| 20 x 3/4" | 20 | 180 | 3,35 |
| 25 x 1/2" | 10 | 120 | 4,40 |
| 25 x 3/4" | 10 | 120 | 4,40 |
| 25 x 1" | 10 | 120 | 4,40 |
| 32 x 3/4" | 10 | 70 | 5,80 |
| 32 x 1" | 10 | 70 | 5,80 |
| 40 x 1" | 5 | 45 | 9,20 |
| 40 x 1"1/4 | 5 | 45 | 9,20 |
| 40 x 1"1/2 | 5 | 45 | 9,20 |
| 50 x 1"1/2 | - | 25 | 12,90 |
| 50 x 2" | - | 25 | 12,90 |
| 63 x 2" | - | 16 | 23,40 |
| 63 x 2"1/2 | - | - | 23,40 |
| 75 x 2" | - | - | 34,20 |
| 75 x 2"1/2 | - | - | 34,20 |
| 75 x 3" | - | - | 34,20 |
| 90 x 3" | - | 6 | 62,35 |
| 90 x 4" | - | - | 62,35 |
| 110 x 3" | - | - | 87,65 |
| 110 x 4" | - | - | 87,65 |



56941

Tappo terminale

End cap
Bouchon de fermeture
Tapón final

| Misura/Size | Busta/Bag | Scatola/Box | Euro Price |
|-------------|-----------|-------------|------------|
| 20 | 20 | 340 | 2,05 |
| 25 | 20 | 240 | 2,25 |
| 32 | 10 | 150 | 2,75 |
| 40 | 10 | 90 | 4,65 |
| 50 | 5 | 60 | 6,90 |
| 63 | - | 35 | 9,40 |
| 75 | - | 22 | 21,75 |
| 90 | - | 16 | 28,10 |
| 110 | - | 7 | 55,05 |

RACCORDI CON INSERTO - BRASS ADAPTORS



55925

Raccordo con inserto maschio

Adaptor with brass insert
Raccord avec taraudage en laiton
Conectór macho en laton

| Misura/Size | Busta/Bag | Scatola/Box | Euro Price |
|-------------|-----------|-------------|------------|
| ø 20 x 1/2" | - | - | 9,75 |
| ø 25 x 3/4" | - | - | 11,65 |
| ø 32 x 1" | - | - | 25,95 |



55935

Raccordo con inserto Femmina

Female adaptor with brass insert
Raccord avec taraudage en laiton
Conectór hembra en laton

| Misura/Size | Busta/Bag | Scatola/Box | Euro Price |
|-------------|-----------|-------------|------------|
| ø 20 x 1/2" | - | - | 8,50 |
| ø 25 x 3/4" | - | - | 10,50 |
| ø 32 x 1" | - | - | 20,00 |

RACCORDI FLANGIATI - FLANGED FITTINGS



55930

Raccordo flangiato

Flanged adaptor
Raccord avec brides
Conectór con brida

| Misura/Size | Busta/Bag | Scatola/Box | Euro Price |
|-------------|-----------|-------------|------------|
| 50 x 1 1/2" | - | - | 22,10 |
| 50 x 2" | - | 20 | 27,55 |
| 63 x 2" | - | 18 | 30,90 |
| 75 x 2 1/2" | - | - | 41,25 |
| 75 x 3" | - | 8 | 44,60 |
| 90 x 3" | - | 8 | 54,95 |
| 90 x 4" | - | - | 61,25 |
| 110 x 4" | - | 6 | 83,05 |
| 110 x 5" | - | - | 94,00 |
| 125 x 4" | - | - | 142,80 |
| 125 x 5" | - | - | 151,60 |



56980

Gomito 90° flangiato

90° Flanged Elbow
90° Coude avec brides
Codo 90° con brida

| Misura/Size | Busta/Bag | Scatola/Box | Euro Price |
|-------------|-----------|-------------|------------|
| 50 x 1 1/2" | - | - | 26,55 |
| 50 x 2" | - | 20 | 29,35 |
| 63 x 2" | - | 15 | 32,95 |
| 75 x 2 1/2" | - | - | 48,35 |
| 75 x 3" | - | 10 | 51,90 |
| 90 x 3" | - | 5 | 71,85 |
| 90 x 4" | - | 5 | 78,80 |
| 110 x 4" | - | 5 | 103,50 |
| 110 x 5" | - | - | 112,90 |



54980

Tee Flangiata

Flanged Tee
Tee avec brides
Te con brida

| Misura/Size | Busta/Bag | Scatola/Box | Euro Price |
|-------------|-----------|-------------|------------|
| 50 x 1 1/2" | - | - | 31,85 |
| 50 x 2" | - | 15 | 34,65 |
| 63 x 2" | - | 12 | 49,35 |
| 75 x 2 1/2" | - | - | 66,05 |
| 75 x 3" | - | 5 | 69,60 |
| 90 x 3" | - | 4 | 98,20 |
| 90 x 4" | - | - | 104,90 |
| 110 x 4" | - | 3 | 125,35 |
| 110 x 5" | - | - | 134,65 |

RACCORDI ALFARAPID- ALFARAPID FITTINGS



55940
Raccordo Alfarapid
 Alfarapid adaptor
 Raccord Alfarapid
 Conector Alfarapid

| Misura/Size | Busta/Bag | Scatola/Box | Euro Price |
|-------------|-----------|-------------|------------|
| ø 50 x 2" | 5 | 50 | 17,57 |
| ø 63 x 2" | - | 40 | 20,27 |
| ø 75 x 3" | - | 24 | 34,00 |
| ø 90 x 3" | - | - | 42,20 |
| ø 90 x 4" | - | 12 | 46,15 |
| ø 110 x 4" | - | 6 | 68,53 |
| ø 125 x 4" | - | - | 125,35 |
| ø 125 x 5" | - | - | 130,80 |



55950
Gomito Alfarapid
 Alfarapid elbow
 Coude Alfarapid
 Codo Alfarapid

| Misura/Size | Busta/Bag | Scatola/Box | Euro Price |
|-------------|-----------|-------------|------------|
| ø 50 x 2" | 5 | 50 | 20,75 |
| ø 63 x 2" | - | 40 | 24,68 |
| ø 75 x 2" | - | 24 | 36,38 |



GAMMA COMPLETA - FULL RANGE - PAG. 31

RICAMBI - SPARE PARTS - PIECES DÉTACHÉES - REPUESTOS

50910

Ghiera
 Nut
 Bague
 Tuerca



| Misura/Size | Euro Price |
|-------------|------------|
| 20 | 0,65 |
| 25 | 0,75 |
| 32 | 1,05 |
| 40 | 1,80 |
| 50 | 2,25 |
| 63 | 3,70 |
| 75 | 7,25 |
| 90 | 16,95 |
| 110 | 22,40 |
| 125 | 52,35 |

50915

Anello di graffaggio
 Clinching ring
 Bague de serrage
 Casquillo interior



| Misura/Size | Euro Price |
|-------------|------------|
| 20 | 0,38 |
| 25 | 0,43 |
| 32 | 0,65 |
| 40 | 0,98 |
| 50 | 1,55 |
| 63 | 2,30 |
| 75 | 3,35 |
| 90 | 4,30 |
| 110 | 6,35 |
| 125 | 14,90 |

50920

Anello di spinta
 Thrust Ring
 Insert
 Manguito rechazador



| Misura/Size | Euro Price |
|-------------|------------|
| 20 | 0,30 |
| 25 | 0,35 |
| 32 | 0,50 |
| 40 | 0,85 |
| 50 | 1,15 |
| 63 | 1,90 |
| 75 | 2,35 |
| 90 | 3,90 |
| 110 | 7,85 |
| 125 | 18,35 |

50925

Anello di tenuta
 O ring gasket
 Joint torique
 Junta tórica



| Misura/Size | Euro Price |
|-------------|------------|
| 20 | 0,38 |
| 25 | 0,57 |
| 32 | 0,65 |
| 40 | 1,00 |
| 50 | 1,10 |
| 63 | 1,60 |
| 75 | 2,05 |
| 90 | 2,76 |
| 110 | 3,45 |
| 125 | 8,10 |

BLU Line Raccordi a compressione

caratteristiche tecniche technical features

| | |
|--|---|
| Corpo Body | Polipropilene nero (PP) Black Polypropylene (PP) |
| Ghiera Nut | Polipropilene blu (PP) Blue Polypropylene (PP) |
| Anello di Graffaggio Clinching Ring | Resina acetilica (POM) Acetal resin (POM) |
| Anello di spinta Thrust ring | Polipropilene nero (PP) Black Polypropylene (PP) |
| Anello di rinforzo Reinforcing ring | Acciaio inox "AISI 430" Stainless steel "AISI 430" |
| Guarnizione Gasket | Gomma nitrilica nera (NBR) Black nitrile rubber (NBR) |
| Pressione di esercizio ammissibile PFA (PN) Allowable operating pressure | $\varnothing 16 \div \varnothing 110$ - 16 $\varnothing 3''$ Fil. Fem./Female thread 10 $\varnothing 4''$ Fil. Fem./Female thread |
| Conformità Conformity | UNI 9561, UNI EN 712, UNI EN 713, UNI EN 715, ISO 14236, UNI EN 10226-1,-2 ANSI/ASME B1.20.1 - UNI EN 1092-1 ANSI/AWWA C 606-87 |



13910

Manicotto

Coupling
Manchon
Manguito



13920

Manicotto ridotto

Reducing coupling
Manchon réduit
Manguito reducido



15910

Raccordo maschio

Male adaptor
Raccord male
Enlace macho



15920

Raccordo femmina

Female adaptor
Raccord femelle
Enlace hembra

| Misura/Size | Busta/Bag | Scatola/Box | Euro Price |
|-------------|-----------|-------------|------------|
| 16 | 20 | 400 | 2,05 |
| 20 | 20 | 240 | 2,85 |
| 25 | 10 | 160 | 3,35 |
| 32 | 10 | 100 | 4,35 |
| 40 | 5 | 50 | 7,10 |
| 50 | 5 | 35 | 9,70 |
| 63 | - | 25 | 13,40 |
| 75 | - | 14 | 25,35 |
| 90 | - | 9 | 33,40 |
| 110 | - | 5 | 67,05 |

| Misura/Size | Busta/Bag | Scatola/Box | Euro Price |
|-------------|-----------|-------------|------------|
| 20 - 16 | 20 | 320 | 2,85 |
| 25 - 16 | 20 | 200 | 3,05 |
| 25 - 20 | 20 | 180 | 3,05 |
| 32 - 20 | 10 | 140 | 3,95 |
| 32 - 25 | 10 | 120 | 3,95 |
| 40 - 32 | 10 | 70 | 6,90 |
| 50 - 32 | - | - | 8,95 |
| 50 - 40 | 5 | 45 | 8,95 |
| 63 - 25 | - | 40 | 12,70 |
| 63 - 32 | - | 40 | 12,70 |
| 63 - 40 | - | 36 | 12,70 |
| 63 - 50 | - | 36 | 12,70 |
| 75 - 40 | - | 20 | 23,10 |
| 75 - 50 | - | 16 | 23,10 |
| 75 - 63 | - | 16 | 23,10 |
| 90 - 63 | - | 12 | 33,60 |
| 90 - 75 | - | 12 | 33,60 |
| 110 - 63 | - | 6 | 70,40 |
| 110 - 75 | - | 6 | 70,40 |
| 110 - 90 | - | 6 | 70,40 |

| Misura/Size | Busta/Bag | Scatola/Box | Euro Price |
|-------------|-----------|-------------|------------|
| 16 x 1/2" | 20 | 600 | 1,35 |
| 16 x 3/4" | 20 | 600 | 1,35 |
| 20 x 1/2" | 20 | 400 | 1,62 |
| 20 x 3/4" | 20 | 400 | 1,62 |
| 25 x 1/2" | 20 | 300 | 1,90 |
| 25 x 3/4" | 20 | 280 | 1,90 |
| 25 x 1" | 20 | 240 | 1,90 |
| 32 x 3/4" | 10 | 180 | 2,10 |
| 32 x 1" | 10 | 160 | 2,40 |
| 32 x 1 1/4" | 10 | 150 | 2,55 |
| 40 x 1" | 10 | 100 | 4,45 |
| 40 x 1 1/4" | 5 | 80 | 4,45 |
| 40 x 1 1/2" | 5 | 80 | 4,45 |
| 50 x 1 1/2" | 5 | 50 | 5,80 |
| 50 x 2" | 5 | 50 | 5,80 |
| 63 x 1 1/2" | - | 48 | 8,25 |
| 63 x 2" | - | 48 | 8,25 |
| 63 x 2 1/2" | - | 40 | 8,25 |
| 75 x 2" | - | 25 | 16,40 |
| 75 x 2 1/2" | - | 25 | 16,40 |
| 75 x 3" | - | 25 | 16,40 |
| 90 x 2" | - | 13 | 25,75 |
| 90 X 2 1/2" | - | 13 | 25,75 |
| 90 x 3" | - | 13 | 25,75 |
| 90 x 4" | - | 13 | 24,28 |
| 110 x 3" | - | 8 | 36,55 |
| 110 x 4" | - | 8 | 36,55 |

| Misura/Size | Busta/Bag | Scatola/Box | Euro Price |
|-------------|-----------|-------------|------------|
| 16 x 1/2" | 20 | 400 | 1,45 |
| 16 x 3/4" | 20 | 400 | 1,45 |
| 20 x 1/2" | 20 | 300 | 1,90 |
| 20 x 3/4" | 20 | 300 | 1,90 |
| 25 x 1/2" | 20 | 240 | 2,25 |
| 25 x 3/4" | 20 | 240 | 2,25 |
| 25 x 1" | 20 | 240 | 2,25 |
| 32 x 3/4" | 10 | 150 | 2,70 |
| 32 x 1" | 10 | 140 | 2,70 |
| 40 x 1" | 10 | 80 | 4,60 |
| 40 x 1 1/4" | 10 | 80 | 4,60 |
| 40 x 1 1/2" | 5 | 80 | 4,60 |
| 50 x 1 1/2" | 5 | 50 | 6,05 |
| 50 x 2" | 5 | 50 | 6,05 |
| 63 x 1 1/2" | - | 40 | 8,60 |
| 63 x 2" | - | 40 | 8,60 |
| 75 x 2" | - | 25 | 17,25 |
| 75 x 2 1/2" | - | 25 | 17,25 |
| 75 x 3" | - | 24 | 17,25 |
| 90 x 3" | - | 12 | 28,40 |
| 110 x 3" | - | 7 | 46,10 |
| 110 x 4" | - | 7 | 46,10 |



16950

Gomito a 90°

90° elbow
Coude à 90°
Codo 90°

| Misura/Size | Busta/Bag | Scatola/Box | Euro Price |
|-------------|-----------|-------------|------------|
| 16 | 20 | 400 | 2,20 |
| 20 | 20 | 240 | 2,85 |
| 25 | 20 | 160 | 3,50 |
| 32 | 10 | 90 | 4,30 |
| 40 | 5 | 45 | 7,50 |
| 50 | 4 | 32 | 10,45 |
| 63 | - | 20 | 12,70 |
| 75 | - | 12 | 24,55 |
| 90 | - | 8 | 38,20 |
| 110 | - | 11 | 63,30 |



16925

Gomito a 90° filettato maschio

90° male threaded elbow
Coude à 90° fileté
Codo 90° macho

| Misura/Size | Busta/Bag | Scatola/Box | Euro Price |
|-------------|-----------|-------------|------------|
| 16 x 1/2" | 20 | 600 | 1,50 |
| 16 x 3/4" | 20 | 480 | 1,50 |
| 20 x 1/2" | 20 | 380 | 1,95 |
| 20 x 3/4" | 20 | 380 | 1,95 |
| 25 x 1/2" | 20 | 240 | 2,35 |
| 25 x 3/4" | 20 | 240 | 2,35 |
| 25 x 1" | 20 | 240 | 2,35 |
| 32 x 3/4" | 10 | 150 | 2,90 |
| 32 x 1" | 10 | 140 | 2,90 |
| 32 x 1"1/4 | 10 | 120 | 2,90 |
| 40 x 1" | 5 | 60 | 5,10 |
| 40 x 1"1/4 | 10 | 80 | 5,10 |
| 40 x 1"1/2 | 10 | 80 | 5,10 |
| 40 x 2" | 5 | 60 | 5,10 |
| 50 x 1"1/4 | 5 | 50 | 7,10 |
| 50 x 1"1/2 | 5 | 50 | 7,10 |
| 50 x 2" | 5 | 50 | 7,10 |
| 63 x 1"1/2 | - | 30 | 8,65 |
| 63 x 2" | - | 30 | 8,65 |
| 63 x 2"1/2 | - | 30 | 8,65 |
| 75 x 2" | - | 20 | 18,90 |
| 75 x 2"1/2 | - | 18 | 18,90 |
| 75 x 3" | - | 18 | 18,90 |
| 90 x 3" | - | 12 | 29,45 |
| 90 x 4" | - | 10 | 29,45 |
| 110 x 4" | - | 7 | 48,75 |



16935

Gomito a 90° filettato femmina

90° female threaded elbow
Coude à 90° taraudé
Codo 90° hembra

| Misura/Size | Busta/Bag | Scatola/Box | Euro Price |
|-------------|-----------|-------------|------------|
| 16 x 1/2" | 20 | 520 | 1,80 |
| 16 x 3/4" | 20 | 400 | 1,80 |
| 20 x 1/2" | 20 | 360 | 2,35 |
| 20 x 3/4" | 20 | 300 | 2,35 |
| 25 x 1/2" | 20 | 260 | 2,85 |
| 25 x 3/4" | 20 | 200 | 2,85 |
| 25 x 1" | 20 | 180 | 2,85 |
| 32 x 3/4" | 10 | 140 | 3,50 |
| 32 x 1" | 10 | 140 | 3,50 |
| 40 x 1" | 5 | 75 | 6,15 |
| 40 x 1"1/4 | 5 | 75 | 6,15 |
| 50 x 1"1/2 | - | 45 | 8,55 |
| 50 x 2" | - | 40 | 8,55 |
| 63 x 2" | - | 30 | 10,40 |
| 75 x 2" | - | 20 | 21,40 |
| 75 x 2"1/2 | - | 20 | 21,40 |
| 90 x 2"1/2 | - | 10 | 33,25 |
| 90 x 3" | - | 18 | 33,25 |
| 110 x 3" | - | 7 | 55,05 |
| 110 x 4" | - | 6 | 55,05 |



14910

Tee a 90°

90° tee
Té à 90°
Te 90°

| Misura/Size | Busta/Bag | Scatola/Box | Euro Price |
|-------------|-----------|-------------|------------|
| 16 | 20 | 240 | 3,10 |
| 20 | 20 | 120 | 3,70 |
| 25 | 10 | 90 | 4,85 |
| 32 | 5 | 50 | 6,35 |
| 40 | 5 | 30 | 10,45 |
| 50 | - | 20 | 14,15 |
| 63 | - | 12 | 25,75 |
| 75 | - | 7 | 36,30 |
| 90 | - | 6 | 60,55 |
| 110 | - | 8 | 93,10 |



14920

Tee a 90° ridotto

90° reducing tee
Té à 90° réduit
Te 90° reducida



14930

Tee a 90° filettato maschio

90° male threaded tee
Té à 90° fileté
Te 90° macho



14940

Tee a 90° filettata femmina

90° female threaded tee
Té à 90° taraudé
Te 90° hembra



16941

Tappo terminale

End cap
Bouchon de fermeture
Tapón final

| Misura/Size | Busta/Bag | Scatola/Box | Euro Price |
|----------------|-----------|-------------|------------|
| 20 - 16 - 20 | 10 | 200 | 4,30 |
| 20 - 25 - 20 | 10 | 120 | 4,75 |
| 25 - 20 - 25 | 10 | 120 | 5,45 |
| 32 - 20 - 32 | 5 | 70 | 6,15 |
| 32 - 25 - 32 | 5 | 70 | 6,15 |
| 40 - 25 - 40 | 5 | 35 | 10,45 |
| 40 - 32 - 40 | 5 | 35 | 10,45 |
| 50 - 25 - 50 | - | 25 | 15,35 |
| 50 - 32 - 50 | - | 25 | 15,35 |
| 50 - 40 - 50 | - | 25 | 15,35 |
| 63 - 25 - 63 | - | 18 | 18,65 |
| 63 - 32 - 63 | - | 18 | 18,65 |
| 63 - 40 - 63 | - | 15 | 18,65 |
| 63 - 50 - 63 | - | 15 | 18,65 |
| 75 - 63 - 75 | - | 8 | 35,05 |
| 90 - 75 - 90 | - | 7 | 60,40 |
| 110 - 63 - 110 | - | - | 97,95 |
| 110 - 90 - 110 | - | - | 97,95 |

| Misura/Size | Busta/Bag | Scatola/Box | Euro Price |
|-------------|-----------|-------------|------------|
| 16 x 1/2" | 20 | 320 | 2,60 |
| 16 x 3/4" | 20 | 300 | 2,60 |
| 20 x 1/2" | 20 | 180 | 3,15 |
| 20 x 3/4" | 20 | 180 | 3,15 |
| 25 x 3/4" | 10 | 120 | 4,15 |
| 25 x 1" | 10 | 120 | 4,15 |
| 32 x 3/4" | 10 | 70 | 5,40 |
| 32 x 1" | 10 | 70 | 5,40 |
| 40 x 1" | 5 | 40 | 8,85 |
| 40 x 1"1/4 | 5 | 40 | 8,85 |
| 40 x 1"1/2 | 5 | 35 | 8,85 |
| 50 x 1"1/2 | - | 30 | 12,05 |
| 50 x 2" | - | 30 | 12,05 |
| 63 x 2" | - | 18 | 21,85 |
| 63 x 2"1/2 | - | 18 | 21,85 |
| 75 x 2" | - | 10 | 30,80 |
| 75 x 2"1/2 | - | 10 | 30,80 |
| 75 x 3" | - | 10 | 37,15 |
| 90 x 3" | - | 7 | 42,65 |
| 90 x 4" | - | 5 | 42,65 |
| 110 x 3" | - | 10 | 81,95 |
| 110 x 4" | - | 10 | 81,95 |

| Misura/Size | Busta/Bag | Scatola/Box | Euro Price |
|-------------|-----------|-------------|------------|
| 16 x 1/2" | 20 | 280 | 2,75 |
| 16 x 3/4" | 20 | 240 | 2,75 |
| 20 x 1/2" | 20 | 180 | 3,35 |
| 20 x 3/4" | 20 | 180 | 3,35 |
| 25 x 1/2" | 10 | 120 | 4,35 |
| 25 x 3/4" | 10 | 120 | 4,35 |
| 25 x 1" | 10 | 100 | 4,35 |
| 32 x 3/4" | 10 | 80 | 5,70 |
| 32 x 1" | 10 | 70 | 5,70 |
| 40 x 1" | 5 | 40 | 9,40 |
| 40 x 1"1/4 | 5 | 40 | 9,40 |
| 40 x 1"1/2 | 5 | 35 | 9,40 |
| 50 x 1"1/4 | - | 25 | 12,75 |
| 50 x 1"1/2 | - | 24 | 12,75 |
| 50 x 2" | - | 25 | 12,75 |
| 63 x 2" | - | 18 | 23,15 |
| 75 x 2" | - | 10 | 33,40 |
| 75 x 2"1/2 | - | 10 | 33,40 |
| 75 x 3" | - | 10 | 33,40 |
| 90 x 3" | - | 7 | 55,71 |
| 90 x 4" | - | 7 | 55,71 |
| 110 x 3" | - | 10 | 85,65 |
| 110 x 4" | - | 10 | 85,65 |

| Misura/Size | Busta/Bag | Scatola/Box | Euro Price |
|-------------|-----------|-------------|------------|
| 16 | 20 | 700 | 1,45 |
| 20 | 20 | 500 | 1,90 |
| 25 | 20 | 300 | 2,10 |
| 32 | 10 | 180 | 2,60 |
| 40 | 10 | 100 | 4,35 |
| 50 | 5 | 60 | 6,45 |
| 63 | - | 45 | 8,75 |
| 75 | - | 25 | 20,35 |
| 90 | - | 16 | 26,25 |
| 110 | - | 8 | 51,45 |

RACCORDI FLANGIATI - FLANGED FITTINGS



15930

Raccordo flangiato

Flanged adaptor
Raccord avec brides
Conector con brida

| Misura/Size | Scatola/Box | Euro Price |
|-------------|-------------|------------|
| 50 x 1" 1/2 | 25 | 21,70 |
| 50 x 2" | 20 | 24,35 |
| 63 x 2" | 18 | 27,00 |
| 75 x 2" 1/2 | 10 | 41,65 |
| 75 x 3" | 10 | 43,55 |
| 90 x 3" | 8 | 53,25 |
| 90 x 4" | 6 | 59,50 |
| 110 x 4" | 6 | 79,70 |



16980

Gomito 90° flangiato

90° Flanged Elbow
90° Coude avec brides
Codo 90° con brida

| Misura/Size | Scatola/Box | Euro Price |
|-------------|-------------|------------|
| 50 x 1" 1/2 | 20 | 25,90 |
| 50 x 2" | 20 | 28,70 |
| 63 x 2" | 16 | 32,10 |
| 75 x 2" 1/2 | - | 46,70 |
| 75 x 3" | 8 | 50,25 |
| 90 x 3" | 5 | 68,90 |
| 90 x 4" | - | 75,65 |
| 110 x 4" | 4 | 99,00 |



14980

Tee Flangiata

Flanged Tee
Tee avec brides
Te con brida

| Misura/Size | Scatola/Box | Euro Price |
|-------------|-------------|------------|
| 50 x 1" 1/2 | - | 30,80 |
| 50 x 2" | - | 33,60 |
| 63 x 2" | 12 | 47,35 |
| 75 x 2" 1/2 | 7 | 61,05 |
| 75 x 3" | 7 | 64,60 |
| 90 x 3" | 5 | 93,50 |
| 90 x 4" | - | 100,20 |
| 110 x 4" | 3 | 119,40 |

FLANGIA E ACCESSORI - FLANGE AND ACCESSORIES - PAG. 19

RICAMBI - SPARE PARTS - PIECES DÉTACHÉES - REPUESTOS

00910

Ghiera

Nut
Bague
Tuerca



| Misura/Size | Euro Price |
|-------------|------------|
| 16 | 0,45 |
| 20 | 0,60 |
| 25 | 0,70 |
| 32 | 0,95 |
| 40 | 1,68 |
| 50 | 2,10 |
| 63 | 3,50 |
| 75 | 6,75 |
| 90 | 15,85 |
| 110 | 20,90 |

00915

Anello di graffaggio

Clinching ring
Bague de serrage
Casquillo interior



| Misura/Size | Euro Price |
|-------------|------------|
| 16 | 0,25 |
| 20 | 0,36 |
| 25 | 0,40 |
| 32 | 0,60 |
| 40 | 0,90 |
| 50 | 1,45 |
| 63 | 2,15 |
| 75 | 3,10 |
| 90 | 4,00 |
| 110 | 5,95 |

00920

Anello di spinta

Thrust Ring
Insert
Manguito rechazador



| Misura/Size | Euro Price |
|-------------|------------|
| 16 | 0,25 |
| 20 | 0,28 |
| 25 | 0,35 |
| 32 | 0,45 |
| 40 | 0,82 |
| 50 | 1,05 |
| 63 | 1,75 |
| 75 | 2,20 |
| 90 | 3,65 |
| 110 | 7,35 |

00925

Anello di tenuta

O ring gasket
Joint torique
Junta tórica



| Misura/Size | Euro Price |
|-------------|------------|
| 16 | 0,33 |
| 20 | 0,36 |
| 25 | 0,54 |
| 32 | 0,60 |
| 40 | 0,90 |
| 50 | 1,02 |
| 63 | 1,46 |
| 75 | 1,92 |
| 90 | 2,60 |
| 110 | 3,25 |

VALVOLE CON ATTACCO A COMPRESSIONE

COMPRESSION BALL VALVES

NEW



18VCBB

Valvola a sfera Compressione

Compression ball valve
Vanne à bille avec raccord à compression
Valvula de bola con junta de compresión

| Codice/Code | Ø | Scatola/Box | Euro Price |
|-------------|----|-------------|------------|
| - 2 | 20 | 30 | 8,40 |
| - 3 | 25 | 20 | 9,95 |
| - 4 | 32 | 15 | 12,50 |
| - 6 | 40 | - | 21,25 |
| - 7 | 50 | - | 25,95 |
| - 8 | 63 | - | 44,00 |

NEW



18VCBF

Valvola a sfera Compressione filettata Femmina

Compression ball valve female
Vanne à bille taraudè avec raccord à compression
Valvula de bola hembra con junta de compresión

| Codice/Code | Ø | Scatola/Box | Euro Price |
|-------------|-----------|-------------|------------|
| -2-B | 20 x 1/2" | 45 | 7,35 |
| -3-C | 25 x 3/4" | 30 | 9,10 |
| -4-D | 32 x 1" | 20 | 10,95 |
| -6-E | 40x1"1/4 | - | 18,50 |
| -7-F | 50x 1"1/2 | - | 22,50 |
| -8-G | 63x2" | - | 29,50 |

NEW



18VCBM

Valvola a sfera Compressione filettata Maschio

Compression ball valve male
Vanne à bille filettè avec raccord à compression
Valvula de bola macho con junta de compresión

| Codice/Code | Ø | Scatola/Box | Euro Price |
|-------------|-----------|-------------|------------|
| -2-B | 20 x 1/2" | 45 | 7,80 |
| -3-C | 25 x 3/4" | 30 | 9,75 |
| -4-D | 32 x 1" | 20 | 11,70 |
| -6-E | 40x1"1/4 | - | 19,70 |
| -7-F | 50x 1"1/2 | - | 27,95 |
| -8-G | 63x2" | - | 44,30 |

caratteristiche tecniche/technical features

Pressione di esercizio ammissibile PFA (PN)
Allowable operating pressure

PN 16

Norme di riferimento
International Standards

ISO 9393-1 : 2004
ISO 9393-2 : 2005
UNI 9561, ISO 14236
UNI EN 10226-1,-2 : 2006
ANSI/ASME B1.20.1

Prescrizioni sanitarie
Sanitary regulations

Prodotti idonei al convogliamento di acqua potabile e fluidi alimentari.
Pieces qualified to the conveyance of drinking water and Alimentary fluids.
DM 23/04/2009
DM 174 6/04/2004 (ex DM 21/3/73).
Reg. UE n° 10/2011

Controlli
Checks

- Materia Prima/Raw Material
- Aspetto/Appearance
- Caratteristiche geometriche/ Geometrical Characteristics
- Marcatura/Marking
- Resistenza a pressione interna/ Resistance to internal pressure: 1h / 20 °C - 1000 h / 95 °C
- Manovrabilità/handling

RUBINETTO D'ARRESTO

STOP COCK

NEW



14RA

Rubinetto d'arresto PN16

PN16 Stop cock
Robinet d'arrêt PN16
Grifo de cierre PN16

| Misura/Size | Busta/Bag | Scatola/Box | Euro Price |
|-------------|-----------|-------------|------------|
| ø 25 | 5 | 70 | 15,00 |
| ø 32 | 5 | 50 | 17,50 |

BLACK Line Raccordi a compressione

caratteristiche tecniche technical features

| | |
|--|---|
| Corpo Body | Polipropilene nero (PP) Black Polypropylene (PP) |
| Ghiera Nut | Polipropilene blu (PP) Blue Polypropylene (PP) |
| Anello di Graffaggio Clinching Ring | Resina acetalica (POM) Acetal resin (POM) |
| Anello di spinta Thrust ring | Polipropilene nero (PP) Black Polypropylene (PP) |
| Anello di rinforzo Reinforcing ring | Acciaio inox "AISI 430" Stainless steel "AISI 430" |
| Guarnizione Gasket | Gomma nitrilica nera (NBR) Black nitrile rubber (NBR) |
| Pressione di esercizio ammissibile PFA (PN) Allowable operating pressure | $\varnothing 16 \div \varnothing 110$ - 16 $\varnothing 3''$ Fil. Fem./Female thread 10 $\varnothing 4''$ Fil. Fem./Female thread |
| Conformità Conformity | UNI 9561, UNI EN 712, UNI EN 713, UNI EN 715, ISO 14236, UNI EN 10226-1,-2 ANSI/ASME B1.20.1 - UNI EN 1092-1 ANSI/AWWA C 606-87 |



13810

Manicotto

Coupling
Manchon
Manguito



13820

Manicotto ridotto

Reducing coupling
Manchon réduit
Manguito reducido



15810

Raccordo maschio

Male adaptor
Raccord male
Enlace macho



15820

Raccordo femmina

Female adaptor
Raccord femelle
Enlace hembra

| Misura/Size | Busta/Bag | Scatola/Box | Euro Price |
|-------------|-----------|-------------|------------|
| 16 | 20 | 480 | 1,60 |
| 20 | 20 | 300 | 2,25 |
| 25 | 20 | 220 | 2,70 |
| 32 | 10 | 120 | 3,50 |
| 40 | 10 | 80 | 5,60 |
| 50 | 5 | 50 | 7,70 |
| 63 | - | 35 | 10,60 |
| 75 | - | 20 | 20,00 |
| 90 | - | 12 | 26,40 |
| 110 | - | 5 | 45,60 |

| Misura/Size | Busta/Bag | Scatola/Box | Euro Price |
|-------------|-----------|-------------|------------|
| 20 - 16 | 20 | 400 | 2,25 |
| 25 - 16 | 20 | 360 | 2,45 |
| 25 - 20 | 20 | 300 | 2,45 |
| 32 - 20 | 10 | 180 | 3,15 |
| 32 - 25 | 10 | 180 | 3,15 |
| 40 - 32 | 5 | 100 | 5,50 |
| 50 - 32 | - | 65 | 7,10 |
| 50 - 40 | - | 65 | 7,10 |
| 63 - 32 | - | 60 | 10,00 |
| 63 - 40 | - | 48 | 10,00 |
| 63 - 50 | - | 42 | 10,00 |
| 75 - 40 | - | 30 | 17,35 |
| 75 - 50 | - | 30 | 17,35 |
| 75 - 63 | - | 25 | 17,35 |
| 90 - 63 | - | 15 | 26,90 |
| 90 - 75 | - | 12 | 26,90 |
| 110 - 75 | - | 8 | 47,80 |
| 110 - 90 | - | 8 | 47,80 |

| Misura/Size | Busta/Bag | Scatola/Box | Euro Price |
|-------------|-----------|-------------|------------|
| 16 x 1/2" | 20 | 660 | 1,10 |
| 16 x 3/4" | 20 | 600 | 1,10 |
| 20 x 1/2" | 20 | 460 | 1,20 |
| 20 x 3/4" | 20 | 460 | 1,20 |
| 25 x 1/2" | 20 | 360 | 1,55 |
| 25 x 3/4" | 20 | 340 | 1,55 |
| 25 x 1" | 20 | 300 | 1,55 |
| 32 x 3/4" | 20 | 200 | 1,90 |
| 32 x 1" | 20 | 200 | 1,90 |
| 32 x 1 1/4" | 20 | 200 | 1,90 |
| 40 x 1" | 10 | 130 | 3,50 |
| 40 x 1 1/4" | 10 | 130 | 3,50 |
| 40 x 1 1/2" | 10 | 120 | 3,35 |
| 50 x 1 1/4" | 5 | 70 | 4,60 |
| 50 x 1 1/2" | 5 | 70 | 4,60 |
| 50 x 2" | 5 | 70 | 4,60 |
| 63 x 1 1/2" | - | 60 | 6,40 |
| 63 x 2" | - | 60 | 6,40 |
| 63 x 2 1/2" | - | 48 | 6,40 |
| 75 x 2" | - | 36 | 12,30 |
| 75 x 2 1/2" | - | 36 | 12,30 |
| 75 x 3" | - | 30 | 12,30 |
| 90 x 2" | - | 20 | 17,50 |
| 90 x 2 1/2" | - | 18 | 17,50 |
| 90 x 3" | - | 18 | 17,50 |
| 90 x 4" | - | 18 | 17,50 |
| 110 x 3" | - | 10 | 25,60 |
| 110 x 4" | - | 10 | 25,60 |

| Misura/Size | Busta/Bag | Scatola/Box | Euro Price |
|-------------|-----------|-------------|------------|
| 16 x 1/2" | 20 | 620 | 1,15 |
| 16 x 3/4" | 20 | 600 | 1,15 |
| 20 x 1/2" | 20 | 480 | 1,50 |
| 20 x 3/4" | 20 | 460 | 1,50 |
| 25 x 1/2" | 20 | 340 | 1,75 |
| 25 x 3/4" | 20 | 340 | 1,75 |
| 25 x 1" | 20 | 280 | 1,75 |
| 32 x 3/4" | 20 | 200 | 2,15 |
| 32 x 1" | 20 | 180 | 2,15 |
| 40 x 1" | 10 | 120 | 3,65 |
| 40 x 1 1/4" | 10 | 120 | 3,65 |
| 40 x 1 1/2" | 5 | 110 | 3,65 |
| 50 x 1 1/4" | 5 | 70 | 4,80 |
| 50 x 1 1/2" | 5 | 70 | 4,80 |
| 50 x 2" | 5 | 60 | 4,80 |
| 63 x 2" | - | 50 | 6,80 |
| 75 x 2" | - | 30 | 13,65 |
| 75 x 2 1/2" | - | 28 | 13,65 |
| 90 x 3" | - | 16 | 20,45 |
| 110 x 3" | - | 10 | 33,25 |
| 110 x 4" | - | 8 | 33,25 |



16850

Gomito a 90°

90° elbow
Coude à 90°
Codo 90°

| Misura/Size | Busta/Bag | Scatola/Box | Euro Price |
|-------------|-----------|-------------|------------|
| 16 | 20 | 420 | 1,75 |
| 20 | 20 | 240 | 2,25 |
| 25 | 20 | 200 | 2,75 |
| 32 | 10 | 110 | 3,40 |
| 40 | 5 | 60 | 5,90 |
| 50 | 4 | 36 | 8,25 |
| 63 | - | 20 | 10,00 |
| 75 | - | 13 | 20,40 |
| 90 | - | 8 | 30,25 |
| 110 | - | 4 | 47,45 |



16825

Gomito a 90° filettato maschio

90° male threaded elbow
Coude à 90° fileté
Codo 90° macho

| Misura/Size | Busta/Bag | Scatola/Box | Euro Price |
|-------------|-----------|-------------|------------|
| 16 x 1/2" | 20 | 600 | 1,20 |
| 16 x 3/4" | 20 | 500 | 1,20 |
| 20 x 1/2" | 20 | 400 | 1,55 |
| 20 x 3/4" | 20 | 400 | 1,55 |
| 25 x 1/2" | 20 | 300 | 1,90 |
| 25 x 3/4" | 20 | 280 | 1,90 |
| 25 x 1" | 20 | 280 | 1,90 |
| 32 x 3/4" | 10 | 180 | 2,30 |
| 32 x 1" | 10 | 160 | 2,30 |
| 32 x 1 1/4" | 10 | 150 | 2,30 |
| 40 x 1" | 5 | 80 | 4,05 |
| 40 x 1 1/4" | 10 | 80 | 4,05 |
| 40 x 1 1/2" | 5 | 80 | 4,05 |
| 40 x 2" | 5 | - | 4,05 |
| 50 x 1 1/4" | 5 | 50 | 5,60 |
| 50 x 1 1/2" | 5 | 50 | 5,60 |
| 50 x 2" | 5 | 50 | 5,60 |
| 63 x 1 1/2" | - | 35 | 6,85 |
| 63 x 2" | - | 35 | 6,85 |
| 63 x 2 1/2" | - | 33 | 6,85 |
| 75 x 2" | - | 20 | 15,70 |
| 75 x 2 1/2" | - | 20 | 15,70 |
| 75 x 3" | - | 20 | 15,70 |
| 90 x 3" | - | 12 | 23,30 |
| 90 x 4" | - | 10 | 23,30 |
| 110 x 4" | - | 8 | 36,50 |



16835

Gomito a 90° filettato femmina

90° female threaded elbow
Coude à 90° taraudé
Codo 90° hembra

| Misura/Size | Busta/Bag | Scatola/Box | Euro Price |
|-------------|-----------|-------------|------------|
| 16 x 1/2" | 20 | 460 | 1,45 |
| 16 x 3/4" | 20 | 460 | 1,45 |
| 20 x 1/2" | 20 | 360 | 1,85 |
| 20 x 3/4" | 20 | 360 | 1,85 |
| 25 x 1/2" | 20 | 300 | 2,25 |
| 25 x 3/4" | 20 | 260 | 2,25 |
| 25 x 1" | 20 | 240 | 2,25 |
| 32 x 3/4" | 10 | 150 | 2,80 |
| 32 x 1" | 10 | 150 | 2,80 |
| 40 x 1" | 5 | 90 | 4,85 |
| 40 x 1 1/4" | 5 | 80 | 4,85 |
| 50 x 1 1/2" | 5 | 50 | 6,80 |
| 50 x 2" | - | 45 | 6,80 |
| 63 x 1 1/2" | - | 30 | 8,25 |
| 63 x 2" | - | 30 | 8,25 |
| 75 x 2" | - | 20 | 17,75 |
| 75 x 2 1/2" | - | 20 | 17,75 |
| 90 x 2 1/2" | - | 12 | 26,30 |
| 90 x 3" | - | 12 | 26,30 |
| 110 x 3" | - | 7 | 41,30 |
| 110 x 4" | - | 7 | 41,30 |



16860

Gomito a 45°

45° elbow
Coude 45°
Codo 45°

| Misura/Size | Busta/Bag | Scatola/Box | Euro Price |
|-------------|-----------|-------------|------------|
| 20 | 20 | 300 | 3,00 |
| 25 | 20 | 200 | 3,60 |



16845

Gomito a 45° filettato maschio

45° male threaded elbow
Coude 45° fileté
Codo 45° macho

| Misura/Size | Busta/Bag | Scatola/Box | Euro Price |
|-------------|-----------|-------------|------------|
| 20 x 1/2" | 20 | 480 | 2,20 |
| 20 x 3/4" | 20 | 460 | 2,20 |
| 25 x 1/2" | 20 | 360 | 2,50 |
| 25 x 3/4" | 20 | 320 | 2,50 |



16855

Gomito a 45° filettato femmina

45° female threaded elbow
Coude 45° taraudé
Codo 45° hembra

| Misura/Size | Busta/Bag | Scatola/Box | Euro Price |
|-------------|-----------|-------------|------------|
| 20 x 1/2" | 20 | 480 | 2,40 |
| 20 x 3/4" | 20 | 460 | 2,40 |
| 25 x 1/2" | 20 | 360 | 2,80 |
| 25 x 3/4" | 20 | 320 | 2,80 |



14810
Tee a 90°
 90° tee
 Té à 90°
 Te 90°

| Misura/Size | Busta/Bag | Scatola/Box | Euro Price |
|-------------|-----------|-------------|------------|
| 16 | 20 | 280 | 2,45 |
| 20 | 20 | 180 | 3,00 |
| 25 | 10 | 120 | 3,85 |
| 32 | 10 | 70 | 5,05 |
| 40 | 5 | 40 | 8,25 |
| 50 | - | 25 | 11,20 |
| 63 | - | 16 | 20,35 |
| 75 | - | 8 | 28,65 |
| 90 | - | 5 | 47,90 |
| 110 | - | 9 | 73,55 |



14820
Tee a 90° ridotto
 90° reducing tee
 Té à 90° réduit
 Te 90° reducida

| Misura/Size | Busta/Bag | Scatola/Box | Euro Price |
|----------------|-----------|-------------|------------|
| 20 - 16 - 20 | 10 | - | 3,40 |
| 20 - 25 - 20 | 10 | 180 | 3,35 |
| 25 - 16 - 25 | 10 | 140 | 3,75 |
| 25 - 20 - 25 | 10 | 140 | 3,75 |
| 25 - 32 - 25 | 10 | 100 | 4,40 |
| 32 - 25 - 32 | 5 | 80 | 4,90 |
| 40 - 25 - 40 | - | 50 | 8,25 |
| 40 - 32 - 40 | - | 50 | 8,25 |
| 50 - 20 - 50 | - | 35 | 12,15 |
| 50 - 25 - 50 | - | 32 | 12,15 |
| 50 - 32 - 50 | - | 32 | 12,15 |
| 50 - 40 - 50 | - | 30 | 12,15 |
| 63 - 20 - 63 | - | 20 | 14,75 |
| 63 - 25 - 63 | - | 20 | 14,75 |
| 63 - 32 - 63 | - | 20 | 14,75 |
| 63 - 40 - 63 | - | 18 | 14,75 |
| 63 - 50 - 63 | - | 17 | 14,75 |
| 75 - 63 - 75 | - | 10 | 32,45 |
| 90 - 75 - 90 | - | 6 | 47,70 |
| 110 - 90 - 110 | - | 9 | 77,40 |



14830
Tee a 90° filettato maschio
 90° male threaded tee
 Té à 90° fileté
 Te 90° macho

| Misura/Size | Busta/Bag | Scatola/Box | Euro Price |
|-------------|-----------|-------------|------------|
| 16 x 1/2" | 10 | 360 | 3,15 |
| 16 x 3/4" | 10 | 300 | 3,15 |
| 20 x 1/2" | 10 | 240 | 2,50 |
| 20 x 3/4" | 10 | 240 | 2,50 |
| 25 x 1/2" | 10 | 160 | 3,30 |
| 25 x 3/4" | 10 | 140 | 3,30 |
| 25 x 1" | 10 | 140 | 3,30 |
| 32 x 3/4" | 10 | 80 | 4,30 |
| 32 x 1" | 10 | 90 | 4,30 |
| 40 x 1" | 5 | 50 | 7,00 |
| 40 x 1"1/4 | 5 | 50 | 7,00 |
| 40 x 1"1/2 | 5 | 50 | 7,00 |
| 50 x 1"1/2 | - | 35 | 9,55 |
| 50 x 2" | - | 30 | 9,55 |
| 63 x 2" | - | 18 | 17,30 |
| 63 x 2"1/2 | - | 18 | 17,30 |
| 75 x 2" | - | 12 | 24,40 |
| 75 x 2"1/2 | - | 10 | 24,40 |
| 75 x 3" | - | 10 | 24,40 |
| 90 x 3" | - | 8 | 33,70 |
| 90 x 4" | - | 7 | 33,70 |
| 110 x 3" | - | 4 | 64,70 |
| 110 x 4" | - | 4 | 64,70 |



14840
Tee a 90° filettata femmina
 90° female threaded tee
 Té à 90° taraudé
 Te 90° hembra

| Misura/Size | Busta/Bag | Scatola/Box | Euro Price |
|-------------|-----------|-------------|------------|
| 16 x 1/2" | 20 | 280 | 2,20 |
| 16 x 3/4" | 20 | 260 | 2,20 |
| 20 x 1/2" | 20 | 200 | 2,65 |
| 20 x 3/4" | 20 | 180 | 2,65 |
| 25 x 1/2" | 10 | 150 | 3,50 |
| 25 x 3/4" | 10 | 120 | 3,50 |
| 25 x 1" | 10 | 120 | 3,50 |
| 32 x 3/4" | 10 | 80 | 4,55 |
| 32 x 1" | 10 | 80 | 4,55 |
| 40 x 1" | 5 | 50 | 7,40 |
| 40 x 1"1/4 | 5 | 45 | 7,40 |
| 40 x 1"1/2 | 5 | 40 | 7,40 |
| 50 x 1"1/4 | - | 35 | 10,10 |
| 50 x 1"1/2 | - | 30 | 10,10 |
| 50 x 2" | - | 25 | 10,10 |
| 63 x 2" | - | 18 | 18,30 |
| 75 x 2" | - | 10 | 26,35 |
| 75 x 2"1/2 | - | 10 | 26,35 |
| 75 x 3" | - | 10 | 26,25 |
| 90 x 3" | - | 6 | 48,30 |
| 90 x 4" | - | 6 | 48,30 |
| 110 x 3" | - | 4 | 67,65 |
| 110 x 4" | - | 4 | 67,65 |



16841

Tappo terminale

End cap
Bouchon de fermeture
Tapón final

| Misura/Size | Busta/Bag | Scatola/Box | Euro Price |
|-------------|-----------|-------------|------------|
| 16 | 20 | 800 | 1,20 |
| 20 | 20 | 600 | 1,55 |
| 25 | 20 | 400 | 1,65 |
| 32 | 20 | 240 | 2,05 |
| 40 | 10 | 140 | 3,50 |
| 50 | 10 | 80 | 5,10 |
| 63 | - | 65 | 6,95 |
| 75 | - | 38 | 15,60 |
| 90 | - | 20 | 20,75 |
| 110 | - | 12 | 40,65 |

RACCORDI RACCORDI FLANGIATI - FLANGED FITTINGS



15830

Raccordo flangiato

Flanged adaptor
Raccord avec brides
Conector con brida

| Misura/Size | Busta/Bag | Scatola/Box | Euro Price |
|-------------|-----------|-------------|------------|
| 50 x 1"1/2 | - | - | 20,40 |
| 50 x 2" | - | - | 23,05 |
| 63 x 2" | - | 20 | 25,05 |
| 75 x 2"1/2 | - | 16 | 36,20 |
| 75 x 3" | - | - | 39,60 |
| 90 x 3" | - | 8 | 46,70 |
| 90 x 4" | - | 8 | 53,00 |
| 110 x 4" | - | 6 | 66,35 |



14880

Tee Flangiata

Flanged Tee
Tee avec brides
Te con brida

| Misura/Size | Busta/Bag | Scatola/Box | Euro Price |
|-------------|-----------|-------------|------------|
| 50 x 1"1/2 | - | - | 27,75 |
| 50 x 2" | - | 15 | 30,50 |
| 63 x 2" | - | - | 41,40 |
| 75 x 2"1/2 | - | - | 54,85 |
| 75 x 3" | - | - | 58,40 |
| 90 x 3" | - | 5 | 79,60 |
| 90 x 4" | - | - | 86,30 |
| 110 x 4" | - | 3 | 102,50 |



16880

Gomito 90° flangiato

90° Flanged Elbow
90° Coude avec brides
Codo 90° con brida

| Misura/Size | Busta/Bag | Scatola/Box | Euro Price |
|-------------|-----------|-------------|------------|
| 50 x 1"1/2 | - | - | 23,85 |
| 50 x 2" | - | 20 | 26,70 |
| 63 x 2" | - | - | 29,30 |
| 75 x 2"1/2 | - | - | 41,80 |
| 75 x 3" | - | - | 45,35 |
| 90 x 3" | - | 6 | 60,15 |
| 90 x 4" | - | - | 66,90 |
| 110 x 4" | - | 4 | 85,30 |

ACCESSORI - ACCESSORIES



FL

Flangia (PPGF)

Flange (PPGF)
Bride
Brida

| Codice/Code | Misura/Size | DN | Scatola/Box | Euro Price |
|-------------|-------------|-----|-------------|------------|
| - 500 | ø 1"1/2 | 40 | 80 | 9,20 |
| - 630 | ø 2" | 50 | 50 | 10,80 |
| - 750 | ø 2" 1/2 | 65 | 40 | 13,25 |
| - 900 | ø 3" | 80 | 30 | 15,25 |
| - 1100 | ø 4" | 100 | 22 | 19,10 |
| - 1125 | ø 5" | 100 | 15 | 24,40 |
| - 1160 | ø 6" | 150 | 13 | 28,00 |



13CPFF

Adattatore filettato per Flangia*

Threaded Flange Adaptor
Collerette pour Bride taraudée
Cuello brida roscado

| Misura/Size | DN Flange | Scatola/Box | Euro Price |
|-----------------|-----------|-------------|------------|
| ø 2" x 2" | 50 | - | 6,00 |
| ø 2"1/2 x 2"1/2 | 63 | - | 8,00 |
| ø 3" x 3" | 80 | - | 9,00 |
| ø 4" x 4" | 100 | - | 12,50 |

* Disponibile anche in Versione scanalata "ALFARAPID" pag. 33
Available also in "ALFARAPID" grooved type



3401

Guarnizione Interflangia

Flat gasket
Joint plait
Junto plana

| Misura/Size | DN | Scatola/Box | Euro Price |
|-------------|-----|-------------|------------|
| 50 | 40 | - | 1,13 |
| 63 | 50 | - | 1,29 |
| 75 | 65 | - | 1,68 |
| 90 | 80 | - | 2,00 |
| 110 | 100 | - | 2,78 |
| 125 | 100 | - | 2,78 |
| 160 | 150 | - | 5,43 |

RICAMBI - SPARE PARTS - PIÈCES DÉTACHÉES - REPUESTOS

00810

Ghiera
Nut
Bague
Tuerca



| Misura/Size | Euro Price |
|-------------|------------|
| 16 | 0,36 |
| 20 | 0,50 |
| 25 | 0,55 |
| 32 | 0,75 |
| 40 | 1,30 |
| 50 | 1,65 |
| 63 | 2,75 |
| 75 | 5,30 |
| 90 | 12,55 |
| 110 | 16,55 |

00815

Anello di graffaggio
Clinching ring
Bague de serrage
Casquillo interior



| Misura/Size | Euro Price |
|-------------|------------|
| 16 | 0,24 |
| 20 | 0,31 |
| 25 | 0,33 |
| 32 | 0,50 |
| 40 | 0,78 |
| 50 | 1,15 |
| 63 | 1,75 |
| 75 | 2,45 |
| 90 | 3,20 |
| 110 | 5,90 |

00820

Anello di spinta
Thrust Ring
Insert
Manguito rechazador



| Misura/Size | Euro Price |
|-------------|------------|
| 16 | 0,24 |
| 20 | 0,28 |
| 25 | 0,36 |
| 32 | 0,45 |
| 40 | 0,85 |
| 50 | 1,05 |
| 63 | 1,75 |
| 75 | 2,20 |
| 90 | 3,65 |
| 110 | 7,35 |

00825

Anello di tenuta
O ring gasket
Joint torique
Junta tórica



| Misura/Size | Euro Price |
|-------------|------------|
| 16 | 0,33 |
| 20 | 0,36 |
| 25 | 0,55 |
| 32 | 0,60 |
| 40 | 0,90 |
| 50 | 1,02 |
| 63 | 1,45 |
| 75 | 1,90 |
| 90 | 2,60 |
| 110 | 3,25 |

ATTREZZATURE - TOOLS



00930

Sbavatore per tubi PE-PPR
Deburring tool for PE and PPR pipes
Ebarboir pour tuyaux en PE et PPR
Rebarbador para tubos en PE y PPR

| Misura/Size | Scatola/Box | Euro Price |
|-------------|-------------|------------|
| 0 - 40 | 1 | 46,80 |



00931

Chiave
Wrench
Clé de serrage
Llave

| Misura/Size | Scatola/Box | Euro Price |
|-------------|-------------|------------|
| 32 - 63 | 1 | 18,72 |
| 75 - 125 | 1 | 26,00 |



00TRA

Tronchese tagliatubi
Cutting nippers
Coupe-tube
Tijeras

| Codice/Code | Misura/Size | Euro Price |
|-------------|-------------|------------|
| -40 | 0 - 40 | 35,00 |
| -63 | 0 - 63 | 105,00 |



00TTS

Tronchese tagliatubi SPECIAL
Cutting nippers special
Coupe-tube special
Tijeras special

| Codice/Code | Misura/Size | Euro Price |
|-------------|-------------|------------|
| -40 | 0 - 40 | 70,00 |
| -75 | 0 - 75 | 290,00 |



00TAT

Tagliatubo a rotella
Roller pipe-cutter
Coupe-tube avec roulette
Corta-tubos

| Codice/Code | Misura/Size | Euro Price |
|-------------|-------------|------------|
| -UB | 0 - 63 | 125,00 |
| -UB-B | 0 - 125 | 230,00 |

Prese a staffa

Clamp saddles

caratteristiche tecniche

technical features

| | |
|--|---|
| Corpo Body | Polipropilene nero(PP) Black Polypropylene (PP) |
| Anello di Rinforzo Reinforcing Ring | Acciaio inox "AISI 430" Stainless steel "AISI 430" |
| Bulloni e dadi Bolts and nuts | Acciaio galvanizzato Galvanized steel Acciaio inox A2/70 AISI 304 (su richiesta) Stainless Steel A2/70 AISI 304 (optional) |
| Guarnizione Gasket | Gomma nitrilica nera (NBR) Black nitrile rubber (NBR) |
| Pressione di esercizio ammissibile PFA (PN) Allowable operating pressure | 16 |
| Conformità Conformity | ISO 13460, UNI EN 10226-1,-2 - ISO 14236 UNI 9561 - ANSI/ASME B1.20.1 |

* PRESE A STAFFA IPS/IPS Clamp saddles

| | |
|--|---|
| Pressione di esercizio ammissibile PFA (PN) Allowable operating pressure | 16 |
| Conformità Conformity | ASTM D 3035, F714 and AWWA C-901/906 |

Prodotti idonei al convogliamento di acqua potabile e fluidi alimentari. Conformi a quanto richiesto dal DM 23/04/2009, DM 174 del 6/04/2004 (ex DM 21/3/73) e Reg. UE n° 10/2011. Pieces qualified to the conveyance of drinking water and alimentary fluids. In conformity with as required in the DM 23/04/2009 and DM 174 del 6/04/2004 (ex DM 21/3/73) and Reg. UE n° 10/2011.

17010

Presse a staffa per tubi in PE e PVC

Clamp saddle for PE and PVC pipes
Collier de prise pour tuyaux en PE et PVC
Collarín de toma para tubos de PE y PVC



| Misura/Size | Bulloni/bolts | Busta/Bag | Scatola/Box | Euro Price |
|--------------|---------------|-----------|-------------|------------|
| 25 x 1/2" | 2 | 1 | 180 | 1,17 |
| 25 x 3/4" | 2 | 1 | 180 | 1,17 |
| 32 x 1/2" | 2 | 1 | 180 | 1,23 |
| 32 x 3/4" | 2 | 1 | 180 | 1,23 |
| 32 x 1" | 2 | 1 | 180 | 1,23 |
| 40 x 1/2" | 2 | 1 | 150 | 1,38 |
| 40 x 3/4" | 2 | 1 | 150 | 1,38 |
| 40 x 1" | 2 | 1 | 150 | 1,38 |
| 50 x 1/2" | 2 | 1 | 100 | 1,66 |
| 50 x 3/4" | 2 | 1 | 100 | 1,66 |
| 50 x 1" | 2 | 1 | 100 | 1,66 |
| 50 x 1 1/4" | 2 | 1 | 100 | 1,66 |
| 63 x 1/2" | 4 | 1 | 100 | 2,20 |
| 63 x 3/4" | 4 | 1 | 100 | 2,20 |
| 63 x 1" | 4 | 1 | 100 | 2,20 |
| 63 x 1 1/4" | 4 | 1 | 100 | 2,20 |
| 63 x 1 1/2" | 4 | 1 | 100 | 2,20 |
| 75 x 1/2" | 4 | 1 | 80 | 2,80 |
| 75 x 3/4" | 4 | 1 | 80 | 2,80 |
| 75 x 1" | 4 | 1 | 80 | 2,80 |
| 75 x 1 1/4" | 4 | 1 | 80 | 2,80 |
| 75 x 1 1/2" | 4 | 1 | 70 | 2,80 |
| 75 x 2" | 4 | 1 | 70 | 2,80 |
| 90 x 1/2" | 4 | 1 | 60 | 3,20 |
| 90 x 3/4" | 4 | 1 | 60 | 3,20 |
| 90 x 1" | 4 | 1 | 60 | 3,20 |
| 90 x 1 1/4" | 4 | 1 | 60 | 3,20 |
| 90 x 1 1/2" | 4 | 1 | 60 | 3,20 |
| 90 x 2" | 4 | 1 | 55 | 3,67 |
| 110 x 1/2" | 4 | 1 | 40 | 3,85 |
| 110 x 3/4" | 4 | 1 | 40 | 3,85 |
| 110 x 1" | 4 | 1 | 40 | 3,85 |
| 110 x 1 1/4" | 4 | 1 | 40 | 3,85 |
| 110 x 1 1/2" | 4 | 1 | 40 | 3,85 |
| 110 x 2" | 4 | 1 | 40 | 3,85 |
| 110 x 2 1/2" | 4 | 1 | 35 | 3,85 |
| 110 x 2 1/2* | 6 | 1 | 35 | 10,52 |
| 110 x 3" | 6 | 1 | 25 | 10,52 |
| 125 x 3/4" | 4 | 1 | 35 | 5,31 |
| 125 x 1" | 4 | 1 | 35 | 5,31 |
| 125 x 1 1/4" | 4 | 1 | 35 | 5,31 |
| 125 x 1 1/2" | 4 | 1 | 35 | 5,31 |
| 125 x 2" | 4 | 1 | 35 | 5,31 |
| 125 x 2 1/2" | 4 | 1 | 35 | 5,31 |
| 140 x 1" | 6 | | 20 | 11,29 |
| 140 x 1 1/4" | 6 | | 20 | 11,29 |
| 140 x 1 1/2" | 6 | | 20 | 11,29 |
| 140 x 2" | 6 | | 20 | 11,29 |
| 160 x 1/2" | 6 | | 18 | 15,92 |
| 160 x 3/4" | 6 | | 18 | 15,92 |
| 160 x 1" | 6 | | 18 | 15,92 |
| 160 x 1 1/4" | 6 | | 18 | 15,92 |
| 160 x 1 1/2" | 6 | | 18 | 15,92 |
| 160 x 2" | 6 | | 18 | 15,92 |
| 160 x 3" | 6 | | 18 | 15,92 |
| 160 x 4" | 6 | | 18 | 15,92 |
| 200 x 1/2" | 6 | | 8 | 46,47 |
| 200 x 3/4" | 6 | | 8 | 46,47 |
| 200 x 1" | 6 | | 8 | 46,47 |
| 200 x 1 1/4" | 6 | | 8 | 46,47 |
| 200 x 1 1/2" | 6 | | 8 | 46,47 |
| 200 x 2" | 6 | | 8 | 46,47 |
| 200 x 3" | 6 | | 8 | 46,47 |
| 200 x 4" | 6 | | 8 | 46,47 |
| 225 x 1/2" | 6 | | 6 | 53,11 |
| 225 x 3/4" | 6 | | 6 | 53,11 |
| 225 x 1" | 6 | | 6 | 53,11 |
| 225 x 1 1/4" | 6 | | 6 | 53,11 |
| 225 x 1 1/2" | 6 | | 6 | 53,11 |
| 225 x 2" | 6 | | 6 | 53,11 |
| 225 x 3" | 6 | | 6 | 53,11 |
| 225 x 4" | 6 | | 6 | 53,11 |
| 250 x 3/4" | 6 | | 4 | 63,06 |
| 250 x 1" | 6 | | 4 | 63,06 |
| 250 x 1 1/4" | 6 | | 4 | 63,06 |
| 250 x 1 1/2" | 6 | | 4 | 63,06 |
| 250 x 2" | 6 | | 4 | 63,06 |
| 250 x 3" | 6 | | 4 | 63,06 |
| 250 x 4" | 6 | | 4 | 63,06 |
| 315 x 1" | 6 | | 3 | 79,65 |
| 315 x 1 1/4" | 6 | | 3 | 79,65 |
| 315 x 1 1/2" | 6 | | 3 | 79,65 |
| 315 x 2" | 6 | | 3 | 79,65 |
| 315 x 3" | 6 | | 3 | 79,65 |
| 315 x 4" | 6 | | 3 | 79,65 |

17020

Presse a staffa doppia per tubi in PE e PVC

Double clamp saddle for PE and PVC pipes
Double collier de prise pour tuyaux en PE et PVC
Collarín de toma doble para tubos de PE y PVC



| Misura/Size | Bulloni/bolts | Busta/Bag | Scatola/Box | Euro Price |
|--------------|---------------|-----------|-------------|------------|
| 25 x 1/2" | 2 | 1 | 170 | 1,66 |
| 25 x 3/4" | 2 | 1 | 170 | 1,66 |
| 32 x 1/2" | 2 | 1 | 150 | 1,86 |
| 32 x 3/4" | 2 | 1 | 150 | 1,86 |
| 32 x 1" | 2 | 1 | 150 | 1,86 |
| 40 x 1/2" | 2 | 1 | 130 | 2,12 |
| 40 x 3/4" | 2 | 1 | 130 | 2,12 |
| 40 x 1" | 2 | 1 | 130 | 2,12 |
| 50 x 1/2" | 2 | 1 | 100 | 2,32 |
| 50 x 3/4" | 2 | 1 | 100 | 2,32 |
| 50 x 1" | 2 | 1 | 100 | 2,32 |
| 50 x 1 1/4" | 2 | 1 | 100 | 2,32 |
| 63 x 1/2" | 4 | 1 | 100 | 2,85 |
| 63 x 3/4" | 4 | 1 | 100 | 2,85 |
| 63 x 1" | 4 | 1 | 100 | 2,85 |
| 63 x 1 1/4" | 4 | 1 | 100 | 2,85 |
| 63 x 1 1/2" | 4 | 1 | 80 | 2,85 |
| 75 x 1/2" | 4 | 1 | 70 | 3,86 |
| 75 x 3/4" | 4 | 1 | 70 | 3,86 |
| 75 x 1" | 4 | 1 | 70 | 3,86 |
| 75 x 1 1/4" | 4 | 1 | 70 | 3,86 |
| 75 x 1 1/2" | 4 | 1 | 70 | 3,86 |
| 75 x 2" | 4 | 1 | 60 | 3,86 |
| 90 x 1/2" | 4 | 1 | 55 | 4,52 |
| 90 x 3/4" | 4 | 1 | 55 | 4,52 |
| 90 x 1" | 4 | 1 | 55 | 4,52 |
| 90 x 1 1/4" | 4 | 1 | 55 | 4,52 |
| 90 x 1 1/2" | 4 | 1 | 55 | 4,52 |
| 90 x 2" | 4 | 1 | 50 | 5,31 |
| 110 x 1/2" | 4 | 1 | 40 | 5,05 |
| 110 x 3/4" | 4 | 1 | 40 | 5,05 |
| 110 x 1" | 4 | 1 | 40 | 5,05 |
| 110 x 1 1/4" | 4 | 1 | 40 | 5,05 |
| 110 x 1 1/2" | 4 | 1 | 40 | 5,05 |
| 110 x 2" | 4 | 1 | 35 | 5,05 |
| 110 x 2 1/2" | 4 | 1 | 35 | 5,05 |
| 110 x 2 1/2* | 6 | 1 | 35 | 13,52 |
| 110 x 3" | 6 | 1 | 25 | 13,52 |
| 125 x 3/4" | 4 | 1 | 35 | 7,30 |
| 125 x 1" | 4 | 1 | 35 | 7,30 |
| 125 x 1 1/4" | 4 | 1 | 35 | 7,30 |
| 125 x 1 1/2" | 4 | 1 | 35 | 7,30 |
| 125 x 2" | 4 | 1 | 35 | 7,30 |
| 125 x 2 1/2" | 4 | 1 | 35 | 7,30 |
| 140 x 1" | 6 | | 20 | 16,61 |
| 140 x 1 1/4" | 6 | | 20 | 16,61 |
| 140 x 1 1/2" | 6 | | 20 | 16,61 |
| 140 x 2" | 6 | | 20 | 16,61 |
| 160 x 1/2" | 6 | | 15 | 19,91 |
| 160 x 3/4" | 6 | | 15 | 19,91 |
| 160 x 1" | 6 | | 15 | 19,91 |
| 160 x 1 1/4" | 6 | | 15 | 19,91 |
| 160 x 1 1/2" | 6 | | 15 | 19,91 |
| 160 x 2" | 6 | | 15 | 19,91 |
| 160 x 3" | 6 | | 15 | 19,91 |
| 160 x 4" | 6 | | 15 | 19,91 |
| 200 x 1/2" | 6 | | 8 | 56,43 |
| 200 x 3/4" | 6 | | 8 | 56,43 |
| 200 x 1" | 6 | | 8 | 56,43 |
| 200 x 1 1/4" | 6 | | 8 | 56,43 |
| 200 x 1 1/2" | 6 | | 8 | 56,43 |
| 200 x 2" | 6 | | 8 | 56,43 |
| 200 x 3" | 6 | | 6 | 56,43 |
| 200 x 4" | 6 | | 6 | 56,43 |
| 225 x 1/2" | 6 | | 5 | 66,38 |
| 225 x 3/4" | 6 | | 6 | 66,38 |
| 225 x 1" | 6 | | 6 | 66,38 |
| 225 x 1 1/4" | 6 | | 6 | 66,38 |
| 225 x 1 1/2" | 6 | | 6 | 66,38 |
| 225 x 2" | 6 | | 6 | 66,38 |
| 225 x 3" | 6 | | 4 | 79,65 |
| 225 x 4" | 6 | | 4 | 79,65 |
| 250 x 3/4" | 6 | | 4 | 79,65 |
| 250 x 1" | 6 | | 4 | 79,65 |
| 250 x 1 1/4" | 6 | | 4 | 79,65 |
| 250 x 1 1/2" | 6 | | 4 | 79,65 |
| 250 x 2" | 6 | | 4 | 79,65 |
| 250 x 3" | 6 | | 4 | 79,65 |
| 250 x 4" | 6 | | 4 | 79,65 |
| 315 x 1" | 6 | | 3 | 95,16 |
| 315 x 1 1/4" | 6 | | 3 | 95,16 |
| 315 x 1 1/2" | 6 | | 3 | 95,16 |
| 315 x 2" | 6 | | 3 | 95,16 |
| 315 x 3" | 6 | | 3 | 95,16 |
| 315 x 4" | 6 | | 3 | 95,16 |

*con 6 bulloni/with 6 bolts

17011

Presse a staffa con anello di rinforzo

Clamp saddle with reinforcing ring
Colliers de prise avec anneau de renforcement
Collarín de toma con anillo de refuerzo



| Misura/Size | Bulloni/bolts | Busta/Bag | Scatola/Box | Euro Price |
|--------------|---------------|-----------|-------------|------------|
| 25 x 1/2" | 2 | 1 | 180 | 2,20 |
| 25 x 3/4" | 2 | 1 | 180 | 2,20 |
| 32 x 1/2" | 2 | 1 | 180 | 2,41 |
| 32 x 3/4" | 2 | 1 | 180 | 2,41 |
| 40 x 1/2" | 2 | 1 | 150 | 2,53 |
| 40 x 3/4" | 2 | 1 | 150 | 2,53 |
| 50 x 1/2" | 2 | 1 | 100 | 2,73 |
| 50 x 3/4" | 2 | 1 | 100 | 2,73 |
| 50 x 1" | 2 | 1 | 100 | 2,73 |
| 63 x 1/2" | 4 | 1 | 100 | 3,53 |
| 63 x 3/4" | 4 | 1 | 100 | 3,53 |
| 63 x 1" | 4 | 1 | 100 | 3,53 |
| 63 x 1"1/4 | 4 | 1 | 100 | 3,53 |
| 75 x 1/2" | 4 | 1 | 80 | 4,52 |
| 75 x 3/4" | 4 | 1 | 80 | 4,52 |
| 75 x 1" | 4 | 1 | 80 | 4,52 |
| 75 x 1"1/4 | 4 | 1 | 80 | 4,52 |
| 75 x 1"1/2 | 4 | 1 | 70 | 4,52 |
| 90 x 1/2" | 4 | 1 | 60 | 5,11 |
| 90 x 3/4" | 4 | 1 | 60 | 5,11 |
| 90 x 1" | 4 | 1 | 60 | 5,11 |
| 90 x 1"1/4 | 4 | 1 | 60 | 5,11 |
| 90 x 1"1/2 | 4 | 1 | 60 | 5,11 |
| 90 x 2" | 4 | 1 | 50 | 6,16 |
| 110 x 1/2" | 4 | 1 | 40 | 5,77 |
| 110 x 3/4" | 4 | 1 | 40 | 5,77 |
| 110 x 1" | 4 | 1 | 40 | 5,77 |
| 110 x 1"1/4 | 4 | 1 | 40 | 5,77 |
| 110 x 1"1/2 | 4 | 1 | 40 | 5,77 |
| 110 x 2" | 4 | 1 | 40 | 5,77 |
| 110 x 2"1/2 | 4 | 1 | 35 | 5,77 |
| 110 x 2"1/2* | 6 | 1 | 25 | 12,35 |
| 110 x 3" | 6 | 1 | 25 | 12,35 |
| 125 x 3/4" | 4 | 1 | 35 | 7,70 |
| 125 x 1" | 4 | 1 | 35 | 7,70 |
| 125 x 1"1/4 | 4 | 1 | 35 | 7,70 |
| 125 x 1"1/2 | 4 | 1 | 35 | 7,70 |
| 125 x 2" | 4 | 1 | 35 | 7,70 |
| 140 x 1" | 6 | 1 | 20 | 14,84 |
| 140 x 1"1/4 | 6 | 1 | 20 | 14,84 |
| 140 x 1"1/2 | 6 | 1 | 20 | 14,84 |
| 140 x 2" | 6 | 1 | 20 | 14,84 |
| 140 x 3" | 6 | 1 | 15 | 18,97 |
| 160 x 1/2" | 6 | 1 | 18 | 18,85 |
| 160 x 3/4" | 6 | 1 | 18 | 18,85 |
| 160 x 1" | 6 | 1 | 18 | 18,85 |
| 160 x 1"1/4 | 6 | 1 | 18 | 18,85 |
| 160 x 1"1/2 | 6 | 1 | 18 | 18,85 |
| 160 x 2" | 6 | 1 | 18 | 18,85 |
| 160 x 3" | 6 | 1 | 15 | 23,24 |
| 160 x 4" | 6 | 1 | 15 | 23,24 |
| 200 x 1/2" | 6 | 1 | 8 | 65,45 |
| 200 x 3/4" | 6 | 1 | 8 | 65,45 |
| 200 x 1" | 6 | 1 | 8 | 65,45 |
| 200 x 1"1/4 | 6 | 1 | 8 | 65,45 |
| 200 x 1"1/2 | 6 | 1 | 8 | 65,45 |
| 200 x 2" | 6 | 1 | 8 | 65,45 |
| 200 x 3" | 6 | 1 | 8 | 67,25 |
| 200 x 4" | 6 | 1 | 8 | 67,25 |
| 225 x 1/2" | 6 | 1 | 6 | 78,33 |
| 225 x 3/4" | 6 | 1 | 6 | 78,33 |
| 225 x 1" | 6 | 1 | 6 | 78,33 |
| 225 x 1"1/4 | 6 | 1 | 6 | 78,33 |
| 225 x 1"1/2 | 6 | 1 | 6 | 78,33 |
| 225 x 2" | 6 | 1 | 6 | 78,33 |
| 225 x 3" | 6 | 1 | 6 | 81,25 |
| 225 x 4" | 6 | 1 | 6 | 81,25 |
| 250 x 3/4" | 6 | 1 | 4 | 92,70 |
| 250 x 1" | 6 | 1 | 4 | 92,70 |
| 250 x 1"1/4 | 6 | 1 | 4 | 92,70 |
| 250 x 1"1/2 | 6 | 1 | 4 | 92,70 |
| 250 x 2" | 6 | 1 | 4 | 92,70 |
| 250 x 3" | 6 | 1 | 4 | 94,60 |
| 250 x 4" | 6 | 1 | 4 | 94,60 |
| 315 x 1" | 6 | 1 | 3 | 115,97 |
| 315 x 1"1/4 | 6 | 1 | 3 | 115,97 |
| 315 x 1"1/2 | 6 | 1 | 3 | 115,97 |
| 315 x 2" | 6 | 1 | 3 | 115,97 |
| 315 x 3" | 6 | 1 | 3 | 120,42 |
| 315 x 4" | 6 | 1 | 3 | 120,42 |

17021

Presse a staffa doppia con anello di rinforzo

Double clamp saddle with reinforcing ring
Double collier de prise avec anneau de renforcement
Collarín de toma doble con anillo de refuerzo



| Misura/Size | Bulloni/bolts | Busta/Bag | Scatola/Box | Euro Price |
|--------------|---------------|-----------|-------------|------------|
| 25 x 1/2" | 2 | 1 | 170 | 2,66 |
| 25 x 3/4" | 2 | 1 | 170 | 2,66 |
| 32 x 1/2" | 2 | 1 | 150 | 3,26 |
| 32 x 3/4" | 2 | 1 | 150 | 3,26 |
| 40 x 1/2" | 2 | 1 | 130 | 3,86 |
| 40 x 3/4" | 2 | 1 | 130 | 3,86 |
| 50 x 1/2" | 2 | 1 | 80 | 4,17 |
| 50 x 3/4" | 2 | 1 | 80 | 4,17 |
| 50 x 1" | 2 | 1 | 80 | 4,17 |
| 63 x 1/2" | 4 | 1 | 100 | 5,05 |
| 63 x 3/4" | 4 | 1 | 100 | 5,05 |
| 63 x 1" | 4 | 1 | 100 | 5,05 |
| 63 x 1"1/4 | 4 | 1 | 100 | 5,05 |
| 75 x 1/2" | 4 | 1 | 70 | 6,63 |
| 75 x 3/4" | 4 | 1 | 70 | 6,63 |
| 75 x 1" | 4 | 1 | 70 | 6,63 |
| 75 x 1"1/4 | 4 | 1 | 70 | 6,63 |
| 75 x 1"1/2 | 4 | 1 | 70 | 6,63 |
| 90 x 1/2" | 4 | 1 | 55 | 7,18 |
| 90 x 3/4" | 4 | 1 | 55 | 7,18 |
| 90 x 1" | 4 | 1 | 55 | 7,18 |
| 90 x 1"1/4 | 4 | 1 | 55 | 7,18 |
| 90 x 1"1/2 | 4 | 1 | 55 | 7,18 |
| 90 x 2" | 4 | 1 | 50 | 8,63 |
| 110 x 1/2" | 4 | 1 | 40 | 9,63 |
| 110 x 3/4" | 4 | 1 | 40 | 9,63 |
| 110 x 1" | 4 | 1 | 40 | 9,63 |
| 110 x 1"1/4 | 4 | 1 | 40 | 9,63 |
| 110 x 1"1/2 | 4 | 1 | 40 | 9,63 |
| 110 x 2" | 4 | 1 | 35 | 9,63 |
| 110 x 2"1/2 | 4 | 1 | 35 | 9,63 |
| 110 x 2"1/2* | 6 | 1 | 25 | 18,36 |
| 110 x 3" | 6 | 1 | 25 | 18,36 |
| 125 x 3/4" | 4 | 1 | 35 | 12,55 |
| 125 x 1" | 4 | 1 | 35 | 12,55 |
| 125 x 1"1/4 | 4 | 1 | 35 | 12,55 |
| 125 x 1"1/2 | 4 | 1 | 35 | 12,55 |
| 125 x 2" | 4 | 1 | 35 | 12,55 |
| 140 x 1" | 6 | 1 | 20 | 17,91 |
| 140 x 1"1/4 | 6 | 1 | 20 | 17,91 |
| 140 x 1"1/2 | 6 | 1 | 20 | 17,91 |
| 140 x 2" | 6 | 1 | 20 | 17,91 |
| 140 x 3" | 6 | 1 | 10 | 23,24 |
| 160 x 1/2" | 6 | 1 | 15 | 23,37 |
| 160 x 3/4" | 6 | 1 | 15 | 23,37 |
| 160 x 1" | 6 | 1 | 15 | 23,37 |
| 160 x 1"1/4 | 6 | 1 | 15 | 23,37 |
| 160 x 1"1/2 | 6 | 1 | 15 | 23,37 |
| 160 x 2" | 6 | 1 | 15 | 23,37 |
| 160 x 3" | 6 | 1 | 15 | 31,80 |
| 160 x 4" | 6 | 1 | 10 | 31,80 |
| 200 x 1/2" | 6 | 1 | 6 | 84,97 |
| 200 x 3/4" | 6 | 1 | 6 | 84,97 |
| 200 x 1" | 6 | 1 | 6 | 84,97 |
| 200 x 1"1/4 | 6 | 1 | 6 | 84,97 |
| 200 x 1"1/2 | 6 | 1 | 6 | 84,97 |
| 200 x 2" | 6 | 1 | 6 | 84,97 |
| 200 x 3" | 6 | 1 | 6 | 92,28 |
| 200 x 4" | 6 | 1 | 6 | 92,28 |
| 225 x 1/2" | 6 | 1 | 4 | 99,70 |
| 225 x 3/4" | 6 | 1 | 4 | 99,70 |
| 225 x 1" | 6 | 1 | 4 | 99,70 |
| 225 x 1"1/4 | 6 | 1 | 4 | 99,70 |
| 225 x 1"1/2 | 6 | 1 | 4 | 99,70 |
| 225 x 2" | 6 | 1 | 4 | 99,70 |
| 225 x 3" | 6 | 1 | 4 | 99,70 |
| 225 x 4" | 6 | 1 | 4 | 99,70 |
| 250 x 3/4" | 6 | 1 | 3 | 136,75 |
| 250 x 1" | 6 | 1 | 3 | 136,75 |
| 250 x 1"1/4 | 6 | 1 | 3 | 136,75 |
| 250 x 1"1/2 | 6 | 1 | 3 | 136,75 |
| 250 x 2" | 6 | 1 | 3 | 136,75 |
| 250 x 3" | 6 | 1 | 3 | 136,75 |
| 250 x 4" | 6 | 1 | 3 | 136,75 |
| 315 x 1" | 6 | 1 | 3 | 182,55 |
| 315 x 1"1/4 | 6 | 1 | 3 | 182,55 |
| 315 x 1"1/2 | 6 | 1 | 3 | 182,55 |
| 315 x 2" | 6 | 1 | 3 | 182,55 |
| 315 x 3" | 6 | 1 | 3 | 182,55 |
| 315 x 4" | 6 | 1 | 3 | 182,55 |

Filettature NPT da ø 1" al ø 4" disponibili su richiesta - prezzi +10% /NPT threads from ø 1" to ø 4" available upon request - prices +10%

**17005****Presse a staffa GARDEN
per tubi in PE e PVC**

Clamp saddle for PE and PVC pipes
Collier de prise pour tuyaux en PE et PVC
Collarín de toma para tubos de PE y PVC

| Misura Size | Bulloni Bolts | Busta Bag | Scatola Box | Euro Price |
|-------------|---------------|-----------|-------------|------------|
| 20 x 1/2" | 2 | 1 | 150 | 0,83 |
| 25 x 1/2" | 2 | 1 | 150 | 0,93 |
| 25 x 3/4" | 2 | 1 | 150 | 0,93 |
| 32 x 1/2" | 2 | 1 | 250 | 1,01 |
| 32 x 3/4" | 2 | 1 | 250 | 1,01 |
| 32 x 1" | 2 | - | - | 1,01 |
| 40 x 1/2" | 2 | - | - | 1,11 |
| 40 x 3/4" | 2 | - | - | 1,11 |
| 40 x 1" | 2 | - | - | 1,11 |

**17030****Presse a staffa per tubi zincati**

Clamp saddle for galvanized pipes
Collier de prise pour tuyaux galvanisés
Collarín de toma para tubos galvanizados

| Misura Size | Bulloni Bolts | Busta Bag | Scatola Box | Euro Price |
|-------------|---------------|-----------|-------------|------------|
| 60 x 1/2" | 4 | 1 | 100 | 2,40 |
| 60 x 3/4" | 4 | 1 | 100 | 2,40 |
| 60 x 1" | 4 | 1 | 100 | 2,40 |
| 60 x 1"1/4 | 4 | 1 | 90 | 2,40 |
| 80 x 1/2" | 4 | 1 | 60 | 2,99 |
| 80 x 3/4" | 4 | 1 | 60 | 2,99 |
| 80 x 1" | 4 | 1 | 60 | 2,99 |
| 80 x 1"1/4 | 4 | 1 | 60 | 2,99 |
| 100 x 3/4" | 4 | 1 | 40 | 3,45 |
| 100 x 1" | 4 | 1 | 40 | 3,45 |
| 100 x 1"1/4 | 4 | 1 | 40 | 3,45 |
| 120 x 3/4" | 4 | 1 | 35 | 4,65 |
| 120 x 1" | 4 | 1 | 35 | 4,65 |
| 120 x 1"1/4 | 4 | 1 | 35 | 4,65 |

**17040****Presse a staffa doppia per tubi zincati**

Double clamp saddle for galvanized pipes
Double collier de prise pour tuyaux galvanisés
Collarín de toma doble para tubos galvanizados

| Misura Size | Bulloni Bolts | Busta Bag | Scatola Box | Euro Price |
|-------------|---------------|-----------|-------------|------------|
| 60 x 1/2" | 4 | 1 | 80 | 3,32 |
| 60 x 3/4" | 4 | 1 | 80 | 3,32 |
| 60 x 1" | 4 | 1 | 80 | 3,32 |
| 60 x 1"1/4 | 4 | 1 | 80 | 3,32 |
| 80 x 1/2" | 4 | 1 | 60 | 4,00 |
| 80 x 3/4" | 4 | 1 | 60 | 4,00 |
| 80 x 1" | 4 | 1 | 60 | 4,00 |
| 80 x 1"1/4 | 4 | 1 | 50 | 4,00 |
| 100 x 3/4" | 4 | 1 | 40 | 4,98 |
| 100 x 1" | 4 | 1 | 40 | 4,98 |
| 100 x 1"1/4 | 4 | 1 | 40 | 4,98 |
| 120 x 3/4" | 4 | 1 | 35 | 6,63 |
| 120 x 1" | 4 | 1 | 35 | 6,63 |
| 120 x 1"1/4 | 4 | 1 | 35 | 6,63 |

**17910****Presse a staffa
con raccordo a compressione**

Clamp saddle with compression fittings
Collier de prise avec raccord à compression
Collarín de toma con junta de comèpression

| Misura Size | Bulloni Bolts | Busta Bag | Scatola Box | Euro Price |
|-------------|---------------|-----------|-------------|------------|
| 25 x 20 | 2 | 1 | 150 | 2,94 |
| 32 x 20 | 2 | 1 | 150 | 3,18 |
| 40 x 20 | 2 | 1 | 120 | 3,67 |
| 50 x 20 | 2 | 1 | 100 | 4,04 |
| 50 x 25 | 2 | 1 | 80 | 4,53 |
| 63 x 25 | 4 | 1 | 80 | 5,44 |
| 75 x 25 | 4 | 1 | 70 | 6,32 |
| 75 x 32 | 4 | 1 | 70 | 6,97 |
| 90 x 25 | 4 | 1 | 55 | 6,97 |
| 90 x 32 | 4 | 1 | 50 | 7,49 |
| 110 x 25 | 4 | 1 | 40 | 7,82 |
| 110 x 32 | 4 | 1 | 35 | 8,50 |
| 110 x 40 | 4 | 1 | 30 | 10,96 |
| 125 x 25 | 4 | 1 | 30 | 11,22 |
| 125 x 32 | 4 | 1 | 30 | 11,88 |
| 125 x 40 | 4 | 1 | 30 | 13,29 |

**17050****Presse a staffa**

per tubi in PE e PVC con derivazione ø 16

Clamp saddle with barbed offtake ø 16

Collier de prise avec derivation cannelé ø 16

Collarín de toma con junta llevatubo ø 16

| Misura Size | Bulloni Bolts | Busta Bag | Scatola Box | Euro Price |
|----------------|------------------|--------------|----------------|---------------|
| 32 x 16 | 2 | 1 | 200 | 0,80 |
| 40 x 16 | 2 | 1 | 200 | 1,28 |

**17060****Presse a staffa doppia**

per tubi PE e PVC con derivazione ø 16

Double clamp saddle with barbed offtake ø 16

Double collier de prise avec derivations cannelé ø 16

Collarín de toma doble con juntas llevatubo ø 16

| Misura Size | Bulloni Bolts | Busta Bag | Scatola Box | Euro Price |
|----------------|------------------|--------------|----------------|---------------|
| 32 x 16 x 16 | 2 | - | - | 1,21 |

SCHEMA DI MONTAGGIO - ASSEMBLY INSTRUCTIONS

Dopo aver individuato il punto di applicazione, preparare la staffa i bulloni e la guarnizione.

After locating the site, prepare the clamp saddle, the bolts and the o'ring.



Posizionare la parte inferiore della staffa sul tubo.

Position the saddle lower on the pipe.



Dopo aver inserito la guarnizione nell'apposita sede, posizionare la parte superiore e cominciare a serrare i bulloni per fare aderire le due selle.

After inserting the o'ring in its proper seat, position the saddle upper part and start screwing the bolts.



Con l'ausilio di una chiave, serrare i bulloni per una perfetta aderenza della staffa sul tubo.

Screw the bolts with a key to make the saddle adhere to the pipe.



Forare con l'ausilio di un trapano, perpendicolarmente al tubo. L'attacco filettato è pronto per essere raccordato alla derivazione.

Drill the pipe perpendicularly. The threaded part is ready to be connected.



PRESE A STAFFA PER TUBI IN POLLICI

IPS SIZING CLAMP SADDLES

27010

Presse a staffa in POLLICI

IPS clamp saddle
Collier de prise selon IPS
Collarín de toma IPS



NEW

| Misura Size | Bulloni Bolts | Busta Bag | Scatola Box | Euro Price |
|----------------|------------------|--------------|----------------|---------------|
| 1"1/2 x 1/2" | 4 | 1 | 100 | 2,20 |
| 1"1/2 x 3/4" | 4 | 1 | 100 | 2,20 |
| 1"1/2 x 1" | 4 | 1 | 100 | 2,20 |
| 2" x 1/2" | 4 | 1 | 100 | 2,62 |
| 2" x 3/4" | 4 | 1 | 100 | 2,62 |
| 2" x 1" | 4 | 1 | 100 | 2,62 |
| 3" x 1/2" | 4/6* | 1 | 60 | 3,69 |
| 3" x 3/4" | 4/6* | 1 | 60 | 3,69 |
| 3" x 1" | 4/6* | 1 | 60 | 3,69 |
| 3" x 1"1/4 | 4/6* | 1 | 60 | 3,69 |
| 3" x 1"1/2 | 4/6* | 1 | 40 | 4,44 |

| Misura Size | Bulloni Bolts | Busta Bag | Scatola Box | Euro Price |
|----------------|------------------|--------------|----------------|---------------|
| 4" x 1/2" | 4/6* | | 60 | 4,44 |
| 4" x 3/4" | 4/6* | 1 | 60 | 4,44 |
| 4" x 1" | 4/6* | 1 | 60 | 4,44 |
| 4" x 1"1/4 | 4/6* | 1 | 40 | 4,44 |
| 4" x 1"1/2 | 4/6* | 1 | 40 | 4,44 |
| 4" x 2" | 4/6* | 1 | 40 | 4,44 |
| 6" x 1/2" | 6 | 1 | 18 | 18,30 |
| 6" x 3/4" | 6 | | 18 | 18,30 |
| 6" x 1" | 6 | | 18 | 18,30 |
| 6" x 1"1/4 | 6 | | 18 | 18,30 |
| 6" x 1"1/2 | 6 | | 18 | 18,30 |
| 6" x 2" | 6 | | 18 | 18,30 |

*6 bulloni su richiesta e con sovrapprezzo
*6 bolts and nuts on request with surcharge

27011

Presse a staffa in POLLICI con anello di rinforzo

IPS clamp saddle with reinforcing ring
Collier de prise IPS avec anneau de renforcement
Collarín de toma IPS con refuerzo



NEW

| Misura Size | Bulloni Bolts | Busta Bag | Scatola Box | Euro Price |
|----------------|------------------|--------------|----------------|---------------|
| 1"1/2 x 1/2" | 4 | 1 | 100 | 3,20 |
| 1"1/2 x 3/4" | 4 | 1 | 100 | 3,20 |
| 1"1/2 x 1" | 4 | 1 | 100 | 3,20 |
| 2" x 1/2" | 4 | 1 | 100 | 4,07 |
| 2" x 3/4" | 4 | 1 | 100 | 4,07 |
| 2" x 1" | 4 | 1 | 100 | 4,07 |
| 3" x 1/2" | 4/6* | 1 | 60 | 5,89 |
| 3" x 3/4" | 4/6* | 1 | 60 | 5,89 |
| 3" x 1" | 4/6* | 1 | 60 | 5,89 |
| 3" x 1"1/4 | 4/6* | 1 | 60 | 5,89 |
| 3" x 1"1/2 | 4/6* | 1 | 55 | 6,50 |

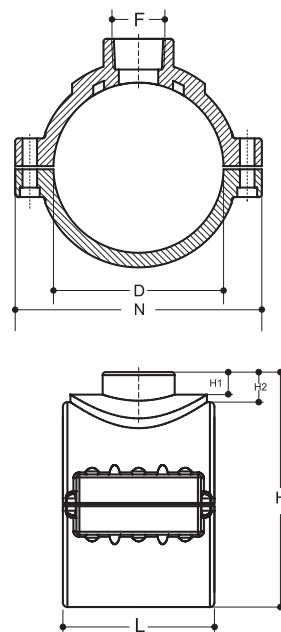
| Misura Size | Bulloni Bolts | Busta Bag | Scatola Box | Euro Price |
|----------------|------------------|--------------|----------------|---------------|
| 4" x 1/2" | 4/6* | 1 | 40 | 6,63 |
| 4" x 3/4" | 4/6* | 1 | 40 | 6,63 |
| 4" x 1" | 4/6* | 1 | 40 | 6,63 |
| 4" x 1"1/4 | 4/6* | 1 | 40 | 6,63 |
| 4" x 1"1/2 | 4/6* | 1 | 40 | 7,30 |
| 4" x 2" | 4/6* | 1 | 35 | 7,60 |
| 6" x 1/2" | 6 | 1 | 18 | 21,65 |
| 6" x 3/4" | 6 | 1 | 18 | 21,65 |
| 6" x 1" | 6 | 1 | 18 | 21,65 |
| 6" x 1"1/4 | 6 | 1 | 18 | 21,65 |
| 6" x 1"1/2 | 6 | 1 | 18 | 21,65 |
| 6" x 2" | 6 | 1 | 18 | 22,65 |

*6 bulloni su richiesta e con sovrapprezzo
*6 bolts and nuts on request with surcharge

| Staffa/Clamp | D | F | N | H | H1 | H2 | L | SEDI BULLONI BOLT SEAT |
|--------------|--------|-----------|-------|------|------|------|------|---------------------------|
| 1" 1/2 | 48.3 | 1/2" NPT | 102.7 | 74.5 | 9.5 | 13 | 65.5 | 4 |
| | | 3/4" NPT | | 74.5 | 11 | 13 | | |
| | | 1" NPT | | 79.5 | 17.5 | 17.5 | | |
| 2" | 60.3 | 1/2" NPT | 102.7 | 96.5 | 18.6 | 18.5 | 67.5 | 4 |
| | | 3/4" NPT | | 96.5 | 18.6 | 18.5 | | |
| | | 1" NPT | | 97.5 | 19.6 | 19.5 | | |
| 3" | 88.9 | 1/2" NPT | 131 | 126 | 13.8 | 18.5 | 84.3 | 4/6 |
| | | 3/4" NPT | | 126 | 13.8 | 18.5 | | |
| | | 1" NPT | | 127 | 14.8 | 19.5 | | |
| | | 1"1/4 NPT | | 131 | 21 | 25.5 | | |
| | | 1"1/2 NPT | | 131 | 21 | 25.5 | | |
| 4" | 114.3 | 1/2" NPT | 158 | 152 | 14 | 18.5 | 98.2 | 4/6 |
| | | 3/4" NPT | | 152 | 14 | 18.5 | | |
| | | 1" NPT | | 153 | 15 | 19.5 | | |
| | | 1"1/4 NPT | | 131 | 21 | 25.5 | | |
| | | 1"1/2 NPT | | 131 | 21 | 25.5 | | |
| | | 2" NPT | | 131 | 21 | 25.5 | | |
| 6" | 168.28 | 1/2" NPT | 228.5 | 208 | 14 | 19 | 139 | 6 |
| | | 3/4" NPT | | 208 | 14 | 19 | | |
| | | 1" NPT | | 209 | 15 | 20 | | |
| | | 1"1/4 NPT | | 215 | 21 | 26 | | |
| | | 1"1/2 NPT | | 215 | 21 | 26 | | |
| | | 2" NPT | | 215 | 21 | 26 | | |

pressione di esercizio - working pressure PN 16

Reference: ASTM D 3035, F714 and AWWA C- 901/906



* disponibile con bulloni in acciaio AISI 304/available with Bolts and nuts in Stainless Steel A2 AISI 304

Raccordi filettati

threaded fittings

caratteristiche tecniche

technical features

Corpo*Body*

Polipropilene nero(PP)
Black Polypropylene (PP)

Anello di rinforzo*Reinforcing ring*

Acciaio inox "AISI 430"
Stainless steel "AISI 430"

**Pressione di esercizio
ammisibile PFA (PN)***Allowable operating pressure*

10 ad esclusione \varnothing 4" Fil. Fem. (**6**)
10 excluded \varnothing 4" Female Thread (**6**)

Conformità*Conformity*

UNI EN 10226-1,2
ANSI/ASME B1.20.1

Prodotti idonei al convogliamento di acqua potabile e fluidi alimentari. Conformi a quanto richiesto dal DM 23/04/2009, DM 174 del 6/04/2004 (ex DM 21/3/73) e Reg. UE n° 10/2011. Pieces qualified to the conveyance of drinking water and alimentary fluids. In conformity with as required in the DM 23/04/2009 and DM 174 del 6/04/2004 (ex DM 21/3/73) and Reg. UE n° 10/2011.



15021

Manicotto

Socket
Manchon
Manguito



15020

Nipplo

Nipple
Mamelon
Machón



15030

Nipplo ridotto

Reducing nipple
Mamelon réduit
Machón reducido



15031

Manicotto ridotto

Reducing socket
Manchon réduit
Manguito reducido



15040

Manicotto ridotto M-F

Reducing socket M-F
Manchon réduit M - F
Manguito reducido M - H



15045

Manicotto ridotto F-M

Reducing socket F-M
Manchon réduit F - M
Manguito reducido H - M

| Misura/Size | Busta/Bag | Scatola/Box | Euro Price |
|-------------|-----------|-------------|------------|
| ø 1/2" | 20 | 1200 | 0,63 |
| ø 3/4" | 20 | 800 | 0,71 |
| ø 1" | 20 | 400 | 0,83 |
| ø 1"1/4 | 10 | 300 | 1,57 |
| ø 1"1/2 | 10 | 200 | 1,84 |
| ø 2" | 5 | 120 | 2,79 |
| * ø 2"1/2 | - | 70 | 8,30 |
| * ø 3" | - | 50 | 9,84 |
| * ø 4" | - | 32 | 17,20 |

| Misura/Size | Busta/Bag | Scatola/Box | Euro Price |
|-------------|-----------|-------------|------------|
| ø 1/2" | 20 | 1800 | 0,21 |
| ø 3/4" | 20 | 1200 | 0,25 |
| ø 1" | 20 | 700 | 0,27 |
| ø 1"1/4 | 10 | 400 | 0,49 |
| ø 1"1/2 | 10 | 300 | 0,69 |
| ø 2" | 10 | 180 | 1,14 |
| ø 2"1/2 | - | 100 | 3,37 |
| ø 3" | - | 84 | 4,00 |
| ø 4" | - | 30 | 7,06 |

| Misura/Size | Busta/Bag | Scatola/Box | Euro Price |
|-----------------|-----------|-------------|------------|
| ø 3/4" x 1/2" | 20 | 1400 | 0,25 |
| ø 1" x 1/2" | 20 | 900 | 0,27 |
| ø 1" x 3/4" | 20 | 800 | 0,27 |
| ø 1"1/4 x 3/4" | 20 | 540 | 0,49 |
| ø 1"1/4 x 1" | 20 | 440 | 0,49 |
| ø 1"1/2 x 1" | 10 | 380 | 0,74 |
| ø 1"1/2 x 1"1/4 | 10 | 340 | 0,74 |
| ø 2" x 1"1/2 | 10 | 200 | 1,14 |
| ø 2"1/2 x 2" | 5 | 100 | 3,69 |
| ø 3" x 2" | - | 100 | 4,31 |
| ø 3" x 2"1/2 | - | 96 | 4,31 |
| ø 4" x 3" | - | 48 | 6,76 |

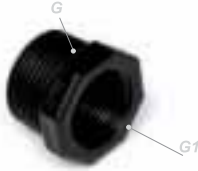
| Misura/Size | Busta/Bag | Scatola/Box | Euro Price |
|-----------------|-----------|-------------|------------|
| ø 3/4" x 1/2" | 20 | 900 | 0,78 |
| ø 1" x 3/4" | 20 | 440 | 0,92 |
| ø 1"1/4 x 1" | 10 | 300 | 1,23 |
| ø 1"1/2 x 1"1/4 | 10 | 200 | 1,90 |
| ø 2" x 1"1/2 | 5 | 150 | 2,95 |
| * ø 2"1/2 x 2" | 5 | 80 | 7,06 |
| * ø 3" x 2" | - | 80 | 9,22 |
| * ø 3" x 2"1/2 | - | 60 | 9,22 |
| * ø 4" x 3" | - | 32 | 17,21 |

| Misura/Size | Busta/Bag | Scatola/Box | Euro Price |
|-----------------|-----------|-------------|------------|
| ø 3/4" x 1/2" | 50 | 1000 | 0,74 |
| ø 1" x 3/4" | 20 | 800 | 0,85 |
| ø 1"1/4 x 3/4" | 20 | 460 | 1,23 |
| ø 1"1/4 x 1" | 20 | 400 | 1,23 |
| ø 1"1/2 x 1"1/4 | 25 | 360 | 1,90 |
| ø 2" x 1"1/2 | 10 | 180 | 2,46 |
| ø 2"1/2 x 2" | - | 120 | 4,91 |
| ø 3" x 2" | - | 90 | 5,77 |
| * ø 3" x 2"1/2 | - | 90 | 8,91 |
| * ø 4" x 3" | - | 36 | 12,28 |

| Misura/Size | Busta/Bag | Scatola/Box | Euro Price |
|-------------------|-----------|-------------|------------|
| ø 3/4" x 1/2" | 50 | 900 | 0,80 |
| ø 1" x 1/2" | 20 | 600 | 0,92 |
| ø 1" x 3/4" | 20 | 600 | 0,92 |
| ø 1"1/4 x 3/4" | - | 400 | 1,35 |
| ø 1"1/4 x 1" | 10 | 400 | 1,35 |
| ø 1"1/2 x 1" | - | - | 1,85 |
| ø 1"1/2 x 1"1/4 | 10 | 200 | 1,85 |
| ø 2" x 1" | - | - | 2,76 |
| ø 2" x 1"1/4 | - | - | 2,76 |
| ø 2" x 1"1/2 | 5 | 140 | 2,76 |
| * ø 2"1/2 x 1"1/4 | - | - | 6,15 |
| * ø 2"1/2 x 1"1/2 | - | 140 | 6,15 |
| * ø 2"1/2 x 2" | - | 90 | 6,15 |
| * ø 3" x 2" | - | 85 | 9,53 |
| * ø 3" x 2"1/2 | - | 85 | 9,53 |
| * ø 4" x 2" | - | - | 12,28 |
| * ø 4" x 2"1/2 | - | - | 12,28 |
| * ø 4" x 3" | - | 45 | 12,28 |

* Filettature con anello di rinforzo / Threads with reinforcing ring: ø 2"1/2 ÷ ø 4"

Filettature NPT disponibili su richiesta - NPT Threads available on request



15041

Riduzione corta M-F

M-F reducing bush
Reduction male-femelle
Reducción macho-hembra

| G x G1 | Busta/Bag | Scatola/Box | Euro Price |
|-------------------|-----------|-------------|------------|
| ø 3/4" x 1/2" | 50 | 2000 | 0,58 |
| ø 1" x 1/2" | 50 | 1200 | 0,61 |
| ø 1" x 3/4" | 50 | 1350 | 0,61 |
| ø 1" 1/4 x 1/2" | 10 | 650 | 0,99 |
| ø 1" 1/4 x 3/4" | 10 | 650 | 0,99 |
| ø 1" 1/4 x 1" | 10 | 650 | 0,99 |
| ø 1" 1/2 x 1/2" | 10 | 500 | 1,73 |
| ø 1" 1/2 x 3/4" | 10 | 500 | 1,73 |
| ø 1" 1/2 x 1" | 10 | 500 | 1,73 |
| ø 1" 1/2 x 1" 1/4 | 10 | 500 | 1,73 |
| ø 2" x 3/4" | 5 | 260 | 2,22 |
| ø 2" x 1" | 5 | 260 | 2,22 |
| ø 2" x 1" 1/4 | 5 | 260 | 2,22 |
| ø 2" x 1" 1/2 | 5 | 260 | 2,22 |
| ø 2" 1/2 x 1" 1/4 | - | 200 | 3,37 |
| ø 2" 1/2 x 1" 1/2 | - | 200 | 3,37 |
| ø 2" 1/2 x 2" | - | 200 | 3,37 |
| ø 3" x 1" | - | 140 | 4,49 |
| ø 3" x 1" 1/4 | - | 140 | 4,49 |
| ø 3" x 1" 1/2 | - | 140 | 4,49 |
| ø 3" x 2" | - | 140 | 4,49 |
| ø 3" x 2" 1/2 | - | 140 | 4,49 |
| ø 4" x 2" | - | 54 | 7,37 |
| ø 4" x 3" | - | 54 | 7,37 |



15320

Attacco per serbatoio

Tank adaptor
Raccord de reservoir
Adaptador del tanque

| Misura/Size | Busta/Bag | Scatola/Box | Euro Price |
|-------------|-----------|-------------|------------|
| ø 1/2" | 10 | | 2,50 |
| ø 3/4" | 10 | | 2,70 |
| ø 1" | 10 | | 3,10 |
| ø 1" 1/2 | 10 | | 5,50 |
| ø 2" | 10 | | 7,00 |



16050

Gomito a 90° Filettato Femmina

90° female threaded elbow
Coude à 90° taraudé
Codo 90° rosca hembra

| Misura/Size | Busta/Bag | Scatola/Box | Euro Price |
|-------------|-----------|-------------|------------|
| ø 1/2" | 20 | 1000 | 0,63 |
| ø 3/4" | 20 | 600 | 0,76 |
| ø 1" | 20 | 340 | 0,89 |
| ø 1" 1/4 | 10 | 200 | 1,67 |
| ø 1" 1/2 | 5 | 120 | 3,07 |
| ø 2" | 2 | 60 | 4,18 |
| * ø 2" 1/2 | - | 45 | 9,22 |
| * ø 3" | - | 25 | 15,36 |
| * ø 4" | - | 16 | 22,73 |



16051

Gomito a 90° M-F

90° male-female elbow
Coude à 90° male - femelle
Codo 90° macho - hembra

| Misura/Size | Busta/Bag | Scatola/Box | Euro Price |
|-------------|-----------|-------------|------------|
| ø 1/2" | 20 | 1000 | 0,74 |
| ø 3/4" | 20 | 540 | 0,83 |
| ø 1" | 20 | 300 | 0,99 |
| ø 1" 1/4 | 10 | 200 | 1,85 |



16052

Gomito a 90° filettato maschio

90° male threaded elbow
Coude à 90° fileté
Codo 90° rosca macho

| Misura/Size | Busta/Bag | Scatola/Box | Euro Price |
|-------------|-----------|-------------|------------|
| ø 1/2" | 50 | 1500 | 0,58 |
| ø 3/4" | 50 | 900 | 0,71 |
| ø 1" | 20 | 500 | 0,83 |
| ø 1" 1/4 | 10 | 250 | 1,57 |
| ø 1" 1/2 | 10 | 230 | 2,76 |



14062

Tee a 90° filettato femmina

90° female threaded tee
Té à 90° taraudé
Te 90° rosca hembra

| Misura/Size | Busta/Bag | Scatola/Box | Euro Price |
|-------------|-----------|-------------|------------|
| ø 1/2" | 20 | 720 | 0,89 |
| ø 3/4" | 10 | 400 | 1,01 |
| ø 1" | 10 | 200 | 1,24 |
| ø 1" 1/4 | 10 | 130 | 2,24 |
| ø 1" 1/2 | 5 | 90 | 3,90 |
| ø 2" | 2 | 44 | 5,58 |
| * ø 2" 1/2 | - | 24 | 15,06 |
| * ø 3" | - | 16 | 23,05 |
| * ø 4" | - | 12 | 36,87 |



14050

Tee a 90° filettato maschio

90° male threaded tee
Té à 90° fileté
Te 90° rosca macho

| Misura/Size | Busta/Bag | Scatola/Box | Euro Price |
|-------------|-----------|-------------|------------|
| ø 1/2" | 50 | 900 | 0,40 |
| ø 3/4" | 20 | 600 | 0,61 |
| ø 1" | 20 | 340 | 0,76 |
| ø 1" 1/4 | 20 | 240 | 0,92 |
| ø 1" 1/2 | 10 | 150 | 1,85 |
| ø 2" | - | 50 | 3,37 |

caratteristiche tecniche technical features

| | | | |
|---|---|--|------------------------------------|
| Giunto <i>Joint</i> | PACV/PAGF | | |
| Raccordi <i>Fittings</i> | Polipropilene nero (PP) Black Polypropylene (PP) | | |
| Guarnizione <i>Gasket</i> | Gomma nitrilica nera (NBR) Black nitrile rubber (NBR) EPDM (optional) VITON (optional) | | |
| Bulloni <i>Bolts</i> | Acciaio galvanizzato Galvanized steel Acciaio inox A2/70 AISI 304 (su richiesta) Stainless Steel A2/70 AISI 304 (optional) | | |
| Pressione max di prova (bar) <i>Maximum test pressure (bar)</i> | 1"½ ÷ 2"½ Giunto/joint : 40 bar Raccordi/fittings: 40 bar | 3" ÷ 4" Giunto/joint : 30 bar Raccordi/fittings: 30 bar | 6" Giunto/joint : 20 bar |
| Conformità <i>Conformity</i> | ISO 14236:2000, ANSI/AWWA C 606-87 Filettature/Thread: UNI EN 10226-1,-2; ANSI/ASME B1.20.1 Dimensione tubi serie metrica (ISO) | | |

**AR1710****Giunto ALFARAPID**

Clamp Joint
Collier
Collarín

| Misura/Size | Materiale/Material | Scatola/Box | Euro Price |
|-------------|--------------------|-------------|------------|
| ø 1"½ | PACV | 65 | 9,57 |
| ø 2" | | 50 | 11,22 |
| ø 2"½ | | 40 | 13,75 |
| ø 3" | | 25 | 15,84 |
| ø 4" | | 18 | 19,80 |
| ø 6" | | - | 29,50 |

RACCORDI - FITTINGS**AR131****Manicotto**

Coupling
Manchon
Manguito

| Misura/Size | Materiale/Material | Scatola/Box | Euro Price |
|-------------|--------------------|-------------|------------|
| ø 1"½ | PP | - | 1,49 |
| ø 2" | | 180 | 1,65 |
| ø 2"½ | | 100 | 2,15 |
| ø 3" | | 80 | 3,74 |
| ø 4" | | 45 | 7,15 |

**AR132****Manicotto Ridotto**

Reducing coupling
Manchon réduit
Manguito reducido

| Misura/Size | Materiale/Material | Scatola/Box | Euro Price |
|-------------|--------------------|-------------|------------|
| ø 2"x1"½ | PP | - | 2,37 |
| ø 2"½x2" | | 120 | 2,75 |
| ø 3"x 2" | | 130 | 3,85 |
| ø 3"x2"½ | | 70 | 3,85 |
| ø 4"x 2" | | 80 | 7,15 |
| ø 4"x2"½ | | 80 | 7,15 |
| ø 4"x 3" | | 78 | 7,15 |

**AR151****Raccordo Filettato Maschio**

Male adaptor*
Raccord male
Unión macho

| Misura/Size | Materiale/Material | Scatola/Box | Euro Price |
|-------------|--------------------|-------------|------------|
| ø 1"½x 1"½ | PP | - | 1,70 |
| ø 2"x1"½ | | - | 1,70 |
| ø 2"x 2" | | 150 | 1,93 |
| ø 2"½x2" | | 120 | 2,26 |
| ø 2"½x 2"½ | | 100 | 2,26 |
| ø 3"x 2" | | 120 | 2,59 |
| ø 3"x 2"½ | | 84 | 2,59 |
| ø 3"x 3" | | 72 | 2,59 |
| ø 4"x 3" | | 48 | 7,81 |
| ø 4"x 4" | | 30 | 7,81 |

*Filettature NPT disponibili su richiesta
NPT Threads available on request

**AR165****Gomito a 90°**

90° elbow
90° Coude
Codo 90°

| Misura/Size | Materiale/Material | Scatola/Box | Euro Price |
|-------------|--------------------|-------------|------------|
| ø 1"½ | PP | 130 | 3,30 |
| ø 2" | | 100 | 3,85 |
| ø 2"½ | | 50 | 6,93 |
| ø 3" | | 30 | 9,96 |
| ø 4" | | 18 | 16,12 |

**AR166****Gomito 90° filettato maschio**

90° male threaded elbow
Coude à 90° fileté
Codo 90° rosca macho

| Misura/Size | Materiale/Material | Scatola/Box | Euro Price |
|-------------|--------------------|-------------|------------|
| ø 1"½ | PP | - | 3,50 |
| ø 2" | | 40 | 4,07 |
| ø 2"½ | | - | 7,95 |
| ø 3" | | - | 10,70 |
| ø 4" | | - | 17,25 |

**AR141****Tee**Tee
Té
Te

| Misura/Size | Materiale/Material | Scatola/Box | Euro Price |
|-------------|--------------------|-------------|------------|
| ø 1"½ | PP | 80 | 4,51 |
| ø 2" | | 50 | 5,23 |
| ø 2"1/2 | | 35 | 9,63 |
| ø 3" | | 24 | 11,50 |
| ø 4" | | 12 | 20,35 |

**AR106****Tappo**Cap
Bouchon
Tapón

| Misura/Size | Materiale/Material | Scatola/Box | Euro Price |
|-------------|--------------------|-------------|------------|
| ø 1"½ | | 200 | 1,49 |
| ø 2" | | 150 | 1,65 |
| ø 2"1/2 | PP | 100 | 2,15 |
| ø 3" | | 120 | 3,74 |
| ø 4" | | 80 | 7,15 |

**AR213/313****Adattatore per polifusione**Socket Welding adaptor
Adpteur à souder
Unión polifusión

| Misura/Size | Scatola/Box | Euro Price | |
|-------------|-------------|---------------|----------------|
| | | PP-R AR213 | PE100 AR313 |
| ø 1"½x 50 | | 2,12 | 2,12 |
| ø 2"x 50 | | 2,12 | 2,12 |
| ø 2"x 63 | | 2,12 | 2,12 |
| ø 2"x 75 | | 2,12 | 2,12 |
| ø 2"½x 63 | | 2,53 | 2,53 |
| ø 2"½x 75 | | 2,53 | 2,53 |
| ø 3"x 75 | | 2,86 | 2,86 |
| ø 3"x 90 | | 2,86 | 2,86 |
| ø 3"x110 | | 3,30 | 3,30 |
| ø 4"x 90 | | 8,59 | 8,59 |
| ø 4"x110 | | 8,59 | 8,59 |

**AR13FL****Adattatore Alfarapid per flangia**ALFARAPID Flange Adaptor
Collerette pour Bride Alfarapid
Cuello brida ALFARAPID

| Misura/Size | Scatola/Box | Euro Price |
|-------------|-------------|------------|
| ø 2" x 2" | 36 | 6,30 |
| ø 3" x 3" | | 9,95 |
| ø 4" x 4" | | 13,10 |

**AR413****Adattatore per PVC**PVC adaptor
Adpteur PVC
Unión PVC

| Misura/Size | Materiale/Material | Scatola/Box | Euro Price |
|-------------|--------------------|-------------|------------|
| ø 50 x 2" | | | 3,30 |
| ø 63 x 2" | PVC | | 3,85 |
| ø 75 x 2" | | | 6,93 |

**55940****Raccordo Alfarapid**Alfarapid adaptor
Raccord Alfarapid
Conectór Alfarapid

| Misura/Size | Busta/Bag | Scatola/Box | Euro Price |
|-------------|-----------|-------------|------------|
| ø 50 x 2" | 5 | 50 | 17,57 |
| ø 63 x 2" | - | 40 | 20,27 |
| ø 75 x 3" | - | 24 | 34,00 |
| ø 90 x 3" | - | - | 42,20 |
| ø 90 x 4" | - | 12 | 46,15 |
| ø 110 x 4" | - | 6 | 68,53 |
| ø 125 x 4" | - | - | 125,35 |
| ø 125 x 5" | - | - | 130,80 |

**56940****Gomito Alfarapid**Alfarapid elbow
Coude Alfarapid
Codo Alfarapid

| Misura/Size | Busta/Bag | Scatola/Box | Euro Price |
|-------------|-----------|-------------|------------|
| ø 50 x 2" | 5 | 50 | 20,75 |
| ø 63 x 2" | - | 40 | 24,68 |
| ø 75 x 2" | - | 24 | 36,38 |

Raccordi in PE

PE fittings

caratteristiche tecniche

technical features

Raccordi

Fittings

Polietilene Alta densità (HDPE)
MRS 10, PE100, SIGMA 80

Condizioni di Servizio

Allowable operating pressure

PN 16, SDR 11, S5

Conformità

Conformity

UNI EN 12201 , UNI EN 1555
UNI EN ISO 15494, UNI EN ISO 1092-1
DIN 2576, DIN 2577

ALTRE MISURE E PN DISPONIBILI SU RICHIESTA
OTHER MEASURES AND PN ON REQUEST



7016

Cartella codolo lungo
 Flanged adaptor extended
 Collet allongé
 Cuello extendido

| Misura/Size | Euro Price |
|-------------|------------|
| 20 | 4,90 |
| 25 | 5,17 |
| 32 | 5,83 |
| 40 | 6,33 |
| 50 | 7,17 |
| 63 | 8,00 |
| 75 | 10,00 |
| 90 | 13,00 |
| 110 | 16,50 |
| 125 | 19,00 |
| 140 | 25,00 |
| 160 | 29,83 |

| Misura/Size | Euro Price |
|-------------|------------|
| 180 | 49,33 |
| 200 | 57,67 |
| 225 | 62,67 |
| 250 | 91,67 |
| 280 | 140,00 |
| 315 | 156,67 |
| 355 | 266,67 |
| 400 | 543,33 |
| 450 | * |
| 500 | * |
| 550 | * |
| 630 | * |



7018

Cartella codolo corto
 Flange adaptor
 Collet
 Cuello

| Misura/Size | Euro Price |
|-------------|------------|
| 63 | 7,10 |
| 75 | 8,37 |
| 90 | 11,77 |
| 110 | 14,03 |
| 125 | 16,47 |
| 140 | 21,27 |
| 160 | 24,83 |
| 180 | 41,43 |
| 200 | 51,07 |
| 225 | 54,77 |

| Misura/Size | Euro Price |
|-------------|------------|
| 250 | 70,80 |
| 280 | 85,83 |
| 315 | 112,07 |
| 355 | 153,23 |
| 400 | 309,27 |
| 450 | 461,07 |
| 500 | 510,73 |
| 560 | 680,97 |
| 630 | 737,70 |



7416

Gomito 90° codolo lungo
 90° Extended elbow
 Coude 90° allongé
 Codo 90° extendido

| Misura/Size | Euro Price |
|-------------|------------|
| 25 | 5,40 |
| 32 | 5,77 |
| 40 | 6,00 |
| 50 | 8,33 |
| 63 | 11,67 |
| 75 | 16,00 |
| 90 | 20,00 |
| 110 | 38,33 |
| 125 | 53,33 |

| Misura/Size | Euro Price |
|-------------|------------|
| 140 | 72,67 |
| 160 | 81,67 |
| 180 | 98,33 |
| 200 | 143,33 |
| 225 | 180,00 |
| 250 | 290,00 |
| 280 | 566,67 |
| 315 | 576,67 |



7516

Gomito 45° codolo lungo
 45° Extended elbow
 Coude 45° allongé
 Codo 45° extendido

| Misura/Size | Euro Price |
|-------------|------------|
| 25 | 5,53 |
| 32 | 5,50 |
| 40 | 6,00 |
| 50 | 7,67 |
| 63 | 11,67 |
| 75 | 15,00 |
| 90 | 19,33 |
| 110 | 36,67 |
| 125 | 53,33 |

| Misura/Size | Euro Price |
|-------------|------------|
| 140 | 68,33 |
| 160 | 78,67 |
| 180 | 93,00 |
| 200 | 126,67 |
| 225 | 163,33 |
| 250 | 230,00 |
| 280 | 473,33 |
| 315 | 490,00 |



8016

Tee 90° codolo lungo
 45° Extended tee
 Tè 90° allongé
 Te extendido

| Misura/Size | Euro Price |
|-------------|------------|
| 25 | 6,50 |
| 32 | 7,33 |
| 40 | 8,67 |
| 50 | 9,83 |
| 63 | 12,67 |
| 75 | 18,00 |
| 90 | 28,67 |
| 110 | 42,33 |
| 125 | 63,33 |

| Misura/Size | Euro Price |
|-------------|------------|
| 140 | 93,00 |
| 160 | 118,33 |
| 180 | 159,67 |
| 200 | 226,67 |
| 225 | 276,67 |
| 250 | 440,00 |
| 280 | 716,67 |
| 315 | 733,33 |



8316

Tee ridotta a 90° codolo lungo
 90° Reducing tee
 Tè à 90° réduit
 Te 90° reducida

| Misura/Size | Euro Price | Misura/Size | Euro Price | Misura/Size | Euro Price |
|-------------|------------|-------------|------------|-------------|------------|
| 50-25 | 18,24 | 140-75 | * | 225-125 | 325,00 |
| 50-32 | 18,24 | 140-90 | 107,33 | 225-160 | 325,00 |
| 50-40 | 18,24 | 140-110 | 143,22 | 225-180 | 325,00 |
| 63-25 | 23,18 | 160-63 | 136,33 | 225-200 | 406,00 |
| 63-32 | 23,18 | 160-75 | * | 250-110 | 526,00 |
| 63-40 | 23,18 | 160-90 | 136,33 | 250-160 | 526,00 |
| 63-50 | 23,18 | 160-110 | 136,33 | 250-180 | 526,00 |
| 75-32 | 30,90 | 160-125 | 136,33 | 315-90 | 850,00 |
| 75-40 | 30,90 | 180-63 | 182,87 | 315-110 | 850,00 |
| 75-50 | 30,90 | 180-90 | 182,87 | 315-125 | * |
| 75-63 | 30,90 | 180-110 | * | 315-160 | 1.093,33 |
| 90-50 | 33,00 | 180-125 | 182,87 | 315-180 | 850,00 |
| 90-63 | 33,00 | 180-140 | 232,00 | 315-200 | 850,00 |
| 90-75 | 45,63 | 180-160 | 232,00 | 315-225 | 850,00 |
| 110-50 | 48,67 | 200-63 | 270,00 | 315-250 | 1.030,00 |
| 110-63 | 48,67 | 200-90 | 270,00 | 315-280 | 1.030,00 |
| 110-75 | 96,72 | 200-110 | 270,00 | | |
| 110-90 | 48,67 | 200-125 | * | | |
| 125-63 | 73,67 | 200-140 | 318,00 | | |
| 125-75 | 93,72 | 200-160 | 270,00 | | |
| 125-90 | 73,67 | 225-75 | 270,00 | | |
| 125-110 | 96,72 | 225-90 | 325,00 | | |
| 140-63 | 107,33 | 225-110 | * | | |

*Prezzi su richiesta/price on request
 Assemblati/assembled



8216
Tee 45° Codolo lungo
Y Fittings

| Misura/Size | Euro Price |
|-------------|------------|
| 63 | 25,53 |
| 90 | 49,67 |
| 110 | 75,20 |
| 125 | 126,27 |
| 160 | 239,77 |



8116
Calotta codolo lungo
Extended cap
Bouchon allongé
Tapón extendido

| Misura/Size | Euro Price |
|-------------|------------|
| 25 | 4,87 |
| 32 | 6,00 |
| 40 | 7,53 |
| 50 | 8,97 |
| 63 | 10,20 |
| 75 | 12,33 |
| 90 | 15,20 |
| 110 | 22,70 |
| 125 | 25,53 |
| 140 | 41,23 |

| Misura/Size | Euro Price |
|-------------|------------|
| 160 | 42,57 |
| 180 | 51,00 |
| 200 | 83,33 |
| 225 | 103,33 |
| 250 | 112,00 |
| 280 | 143,33 |
| 315 | 255,33 |
| 355 | 304,00 |
| 400 | 575,64 |



7216
Riduzione codolo lungo
Extended reducer
Réduction allongé
Reducción extendida

| Misura/Size | Euro Price |
|-------------|--------------------------------|
| 25x20 | <i>Su richiesta/On request</i> |
| 32x25 | <i>Su richiesta/On request</i> |
| 40x20 | 7,02 |
| 40x25 | 7,02 |
| 40x32 | 7,02 |
| 50x25 | 6,87 |
| 50x32 | 6,87 |
| 50x40 | 6,87 |
| 63x20 | <i>Su richiesta/On request</i> |
| 63x25 | 8,00 |
| 63x32 | 8,00 |
| 63x40 | 8,00 |
| 63x50 | 8,00 |
| 75x32 | 9,93 |
| 75x50 | 9,93 |
| 75x63 | 9,93 |
| 90x50 | 13,20 |
| 90x63 | 13,20 |
| 90x75 | 13,20 |
| 110x50 | 17,47 |
| 110x63 | 17,47 |
| 110x75 | 17,47 |
| 110x90 | 17,47 |
| 125x63 | 24,67 |
| 125x75 | 24,67 |
| 125x90 | 24,67 |
| 125x110 | 24,67 |
| 140x63 | 38,33 |
| 140x75 | <i>Su richiesta/On request</i> |

| Misura/Size | Euro Price |
|-------------|--------------------------------|
| 140x90 | 38,33 |
| 140x110 | 38,33 |
| 140x125 | 38,33 |
| 160x90 | 46,40 |
| 160x110 | 46,40 |
| 160x125 | 46,40 |
| 160x140 | 46,40 |
| 180x110 | 53,33 |
| 180x125 | 53,33 |
| 180x140 | 53,33 |
| 180x160 | 53,33 |
| 200x125 | 70,23 |
| 200x140 | 70,23 |
| 200x160 | 70,23 |
| 200x180 | 70,23 |
| 225x75 | <i>Su richiesta/On request</i> |
| 225x110 | <i>Su richiesta/On request</i> |
| 225x125 | <i>Su richiesta/On request</i> |
| 225x160 | 95,77 |
| 225x180 | 95,77 |
| 225x200 | 95,77 |
| 250x160 | 189,53 |
| 250x180 | 127,67 |
| 250x200 | 127,67 |
| 250x225 | 175,67 |
| 280x250 | <i>Su richiesta/On request</i> |
| 315x200 | <i>Su richiesta/On request</i> |
| 315x225 | 209,97 |
| 315x250 | 209,97 |



7316
Riduzione codolo corto
Reducer
Réduction
Reducción

| Misura/Size | Euro Price |
|-------------|------------|
| 250x180 | 99,30 |
| 250x200 | 99,30 |
| 250x225 | 99,30 |
| 280x200 | 119,17 |
| 280x225 | 119,17 |
| 280x250 | 119,17 |
| 315x225 | 126,27 |
| 315x250 | 126,27 |
| 315x280 | 126,27 |
| 355x250 | 154,63 |
| 355x280 | 154,63 |
| 355x315 | 154,63 |
| 400x280 | 295,10 |
| 400x315 | 468,17 |

| Misura/Size | Euro Price |
|-------------|------------|
| 400x355 | 468,17 |
| 450x315 | 468,17 |
| 450x355 | 468,17 |
| 450x400 | 429,87 |
| 500x355 | 692,33 |
| 500x400 | 692,33 |
| 500x450 | 692,33 |
| 560x400 | 964,70 |
| 560x450 | 666,77 |
| 560x500 | 666,77 |
| 630x450 | 1.106,67 |
| 630x500 | 1.106,67 |
| 630x560 | 923,33 |



9016
Manicotto elettrico*
 Coupling
 Manchon
 Manguito

*PN10: su richiesta/on request

| Misura/Size | Euro Price |
|-------------|-------------------------|
| 20 | Su richiesta/On request |
| 25 | Su richiesta/On request |
| 32 | Su richiesta/On request |
| 40 | Su richiesta/On request |
| 50 | 10,50 |
| 63 | 11,10 |
| 75 | 18,00 |
| 90 | 19,33 |
| 110 | 24,17 |
| 125 | 35,00 |
| 140 | 41,33 |
| 160 | 45,33 |
| 180 | 63,33 |

| Misura/Size | Euro Price |
|-------------|-------------------------|
| 200 | 73,00 |
| 225 | 89,67 |
| 250 | 150,00 |
| 280 | 204,33 |
| 315 | 226,67 |
| 355 | 423,33 |
| 400 | 529,33 |
| 450 | 758,00 |
| 500 | 1.023,33 |
| 560 | 1.316,57 |
| 630 | 2.993,33 |
| 710 | Su richiesta/On request |
| 800 | Su richiesta/On request |



9116
Manicotto ridotto
 Reducer
 Reduction
 Reducción

| Misura/Size | Euro Price |
|-------------|-------------------------|
| 25-20 | Su richiesta/On request |
| 32-20 | 11,67 |
| 32-25 | 11,67 |
| 40-20 | Su richiesta/On request |
| 40-25 | 17,67 |
| 40-32 | 17,67 |
| 50-20 | Su richiesta/On request |
| 50-25 | Su richiesta/On request |
| 50-32 | 19,97 |
| 50-40 | 19,97 |
| 63-32 | 23,30 |
| 63-40 | 23,30 |
| 63-50 | 23,30 |

| Misura/Size | Euro Price |
|-------------|-------------------------|
| 75-50 | Su richiesta/On request |
| 75-63 | 30,00 |
| 90-50 | 33,27 |
| 90-63 | 33,27 |
| 110-63 | 46,50 |
| 110-90 | 46,50 |
| 125-90 | 75,80 |
| 160-90 | 113,07 |
| 160-110 | 113,07 |
| 160-125 | 172,90 |
| 180-125 | Su richiesta/On request |
| 200-160 | 172,90 |
| 225-160 | Su richiesta/On request |



9519
Galotta elettrica
 End cap
 Bouchon
 Casquete

| Misura/Size | Euro Price |
|-------------|-------------------------|
| 20 | Su richiesta/On request |
| 25 | Su richiesta/On request |
| 32 | 15,00 |
| 40 | 16,50 |
| 50 | 22,60 |
| 63 | 25,00 |
| 75 | 34,33 |
| 90 | 38,83 |
| 110 | 53,07 |

| Misura/Size | Euro Price |
|-------------|------------|
| 125 | 67,17 |
| 140 | 94,43 |
| 160 | 99,10 |
| 180 | 128,33 |
| 200 | 173,33 |
| 225 | 210,00 |
| 250 | 296,67 |
| 280 | 386,67 |
| 315 | 546,67 |



9316
Gomito 90° elettrico
 90° elbow
 Coude 90°
 Codo 90°

| Misura/Size | Euro Price |
|-------------|------------|
| 20 | 18,00 |
| 25 | 18,00 |
| 32 | 18,60 |
| 40 | 19,43 |
| 50 | 27,67 |
| 63 | 30,60 |
| 75 | 46,00 |
| 90 | 48,57 |
| 110 | 69,17 |

| Misura/Size | Euro Price |
|-------------|-------------------------|
| 125 | 99,77 |
| 140 | 154,27 |
| 160 | 162,27 |
| 180 | 218,13 |
| 200 | 332,50 |
| 225 | 386,67 |
| 250 | Su richiesta/On request |
| 280 | Su richiesta/On request |
| 315 | Su richiesta/On request |



9416
Gomito 45° elettrico
 45° elbow
 Coude 45°
 Codo 45°

| Misura/Size | Euro Price |
|-------------|-------------------------|
| 20 | Su richiesta/On request |
| 25 | Su richiesta/On request |
| 32 | 18,60 |
| 40 | 19,43 |
| 50 | 27,67 |
| 63 | 30,60 |
| 75 | 46,00 |
| 90 | 48,57 |
| 110 | 69,17 |

| Misura/Size | Euro Price |
|-------------|-------------------------|
| 125 | 99,77 |
| 140 | 154,27 |
| 160 | 162,27 |
| 180 | 218,13 |
| 200 | 332,50 |
| 225 | 386,67 |
| 250 | Su richiesta/On request |
| 280 | Su richiesta/On request |
| 315 | Su richiesta/On request |



9411
Gomito 30° elettrico
 30° elbow
 Coude 30°
 Codo 30°

| Misura/Size | Euro Price |
|-------------|-------------------------|
| 90 | Su richiesta/On request |
| 110 | Su richiesta/On request |
| 125 | Su richiesta/On request |
| 160 | Su richiesta/On request |



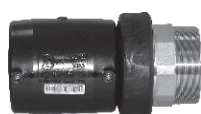
9216

Tee 90° elettrica F/M/F

90° Tee
Tè 90°
Te 90°

| Misura/Size | Euro Price |
|-------------|------------|
| 20 | 21,33 |
| 25 | 22,00 |
| 32 | 22,33 |
| 40 | 25,83 |
| 50 | 30,83 |
| 63 | 33,00 |
| 75 | 51,17 |
| 90 | 53,27 |
| 110 | 77,13 |

| Misura/Size | Euro Price |
|-------------|--------------------------------|
| 125 | 103,73 |
| 140 | 180,87 |
| 160 | 183,53 |
| 180 | 246,07 |
| 200 | 385,67 |
| 225 | 453,33 |
| 250 | <i>Su richiesta/On request</i> |
| 315 | <i>Su richiesta/On request</i> |

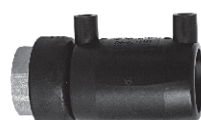


9700

Manicotto elettrico di transizione maschio

Transition electrofusion coupler male (brass)

| Misura/Size | Euro Price |
|-------------|------------|
| ø 20x1/2" | 27,93 |
| ø 25x3/4" | 30,60 |
| ø 32x1" | 37,90 |
| ø 40x1"1/4 | 47,87 |
| ø 50x1"1/2 | 65,17 |
| ø 63x2" | 76,50 |
| ø 75x2"1/2 | 150,00 |
| ø 90x3" | 204,83 |
| ø 110x4" | 267,33 |



9701

Manicotto elettrico di transizione femmina

Transition electrofusion coupler female (brass)

| Misura/Size | Euro Price |
|-------------|------------|
| ø 20x1/2" | 27,93 |
| ø 25x3/4" | 30,30 |
| ø 32x1" | 37,90 |
| ø 40x1"1/4 | 47,87 |
| ø 50x1"1/2 | 65,17 |
| ø 63x2" | 76,50 |
| ø 75x2"1/2 | 126,33 |
| ø 90x3" | 159,60 |
| ø 110x4" | 239,40 |



9516

Collare di presa in carico

Electrofusion branching saddle

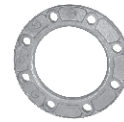
| Misura/Size | Euro Price |
|-------------------------|------------|
| 40 x 20-25-32-40 | 29,93 |
| 50 x 20-25-32-40-50-63 | 38,03 |
| 63 x 20-25-32-40-50-63 | 39,63 |
| 75 x 20-25-32-40-50-63 | 40,97 |
| 90 x 20-25-32-40-50-63 | 41,90 |
| 110 x 20-25-32-40-50-63 | 44,30 |
| 125 x 20-25-32-40-50-63 | 46,83 |
| 140 x 20-25-32-40-50-63 | 51,87 |

| Misura/Size | Euro Price |
|-------------------------|------------|
| 160 x 20-25-32-40 | 51,87 |
| 180 x 20-25-32-40-50-63 | 61,83 |
| 200 x 20-25-32-40-50-63 | 62,63 |
| 225 x 20-25-32-40-50-63 | 66,30 |
| 250 x 20-25-32-40-50-63 | 99,20 |
| 280 x 20-25-32-40-50-63 | 113,97 |
| 315 x 20-25-32-40-50-63 | 129,00 |



3400
Flangia per cartella
 Backing flange
 Bride libre
 Brida libre

| Misura/Size | DN |
|-------------|-----|
| 25 | 20 |
| 32 | 25 |
| 40 | 32 |
| 50 | 40 |
| 63 | 50 |
| 75 | 65 |
| 90 | 80 |
| 110 | 100 |
| 125 | 100 |
| 140 | 125 |
| 160 | 150 |
| 180 | 150 |
| 200 | 200 |
| 225 | 200 |
| 250 | 250 |
| 280 | 250 |
| 315 | 300 |
| 355 | 350 |
| 400 | 400 |
| 450 | 500 |
| 500 | 500 |
| 560 | 600 |
| 630 | 600 |
| 710 | 700 |
| 800 | 800 |



ALLUMINIO
Aluminium

PN10
UNI EN 1092
3400

Euro Price

su richiesta/on request



ACCIAIO ZINCATO
Galvanized steel

PN10
UNI EN 1092
3400A

PN16
UNI EN 1092
3400B

Euro Price

Euro Price

su richiesta/on request

Su richiesta/On request



3404
Flangia filettata
 Threaded flange
 Bride avec filetage
 Brida roscada

| Misura/Size | G | Euro Price |
|-------------|--------|-------------------------|
| 50 | 2" | Su richiesta/On request |
| 65 | 2 1/2" | |
| 80 | 3" | |
| 100 | 4" | |
| 125 | 5" | |
| 150 | 6" | |



3401
Guarnizione interflangia
 Flat gasket
 Joint plait
 Junta plana

| Misura/Size | DN | Euro Price |
|-------------|-----|------------|
| 25 | 20 | 0,96 |
| 32 | 25 | 0,96 |
| 40 | 32 | 1,04 |
| 50 | 40 | 1,13 |
| 63 | 50 | 1,29 |
| 75 | 65 | 1,68 |
| 90 | 80 | 2,00 |
| 110 | 100 | 2,78 |
| 125 | 100 | 2,78 |
| 140 | 125 | 4,06 |
| 160 | 150 | 5,43 |
| 180 | 150 | 5,43 |
| 200 | 200 | 10,85 |
| 225 | 200 | 10,85 |
| 250 | 250 | 15,18 |
| 280 | 250 | 15,18 |
| 315 | 300 | 18,08 |
| 355 | 350 | 21,95 |
| 400 | 400 | 27,76 |

Le presenti condizioni generali sono applicate a tutte le ordinazioni pervenute dopo l'emissione del presente listino; sono soggette a cambiamenti senza alcun preavviso e si intendano accettate integralmente con il conferimento dell'ordine.

1) Prezzi: Saranno applicati quelli in vigore alla data di consegna.
2) Termini di consegna: Pronto, salvo il venduto. E' facoltà del venditore evadere l'ordine in più riprese senza che ciò dia diritto all'annullamento dell'ordine o di parte di esso. La merce è venduta franco i nostri magazzini di Coltagliano.

3) Spedizione: Nei casi in cui il mezzo di spedizione non sia esplicitamente indicato dal cliente, la spedizione verrà effettuata nel modo da noi ritenuto più idoneo. La merce viaggia a rischio e pericolo del Committente, anche se spedita in porto franco.

L'assicurazione viene coperto solo su richiesta ed a carico del compratore.
4) Reclami: Eventuali reclami devono essere fatti entro trenta giorni dalla data di fatturazione o mezzo lettera raccomandata e nei termini prescritti dal Codice Civile. Non vengono accettati materiali di ritorno se non preventivamente autorizzati dai nostri funzionari competenti.

5) Imballaggio: Normale, gratis. Imballi particolari, se richiesti verranno addebitati al cliente.
6) Garanzia: Il nostro materiale si intende garantito per i guasti dovuti a difetto di costruzione, di materiale o di lavorazione a noi imputabili.

La garanzia decade qualora:
 - Sia trascorso un anno dalla consegna del materiale.
 - Il materiale sia impiegato al di fuori delle condizioni di esercizio da noi indicate.
 - Il materiale sia stato comunque modificato o manipolato.

La nostra garanzia si limita alla sostituzione dei prodotti difettosi o alla loro riparazione nella nostra Sede con la completa esclusione di qualsiasi altra responsabilità ad in particolare con l'esclusione di indennizzi o riconoscimento di danni comunque causati dall'uso dei prodotti.

7) Pagamento: Forma di pagamento da concordare: R.I.B.A., rimessa diretta, Bonifico, L/C irrevocabile e confermata, garanzia bancaria, contra documenti. I pagamenti effettuati a mezzo rimessa diretta devono essere fatti alla ns. Sede di Coltagliano.

In caso di ritardo pagamento, la società si avvale dell'irapibilità degli interessi di mora in deroga al DL 231/2002 salvo eventuali future nostre comunicazioni, inoltre tutte le spese relative al recupero delle somme fatturate oggetto di un ritardo pagamento, saranno addebitate al cliente stesso.

Per ogni controversia il Foro competente è quello di Coltagliano.
8) Riserva di proprietà: I prodotti forniti restano di nostra proprietà fino al totale pagamento di essi.

9) Prodotti a Marchio: L'acquirente, per quanto riguarda i prodotti a Marchio, è tenuto a consentire l'accesso dei funzionari dell'IP S.r.l. per esami e verifiche di conformità dei prodotti alle norme. Queste condizioni generali annullano tutte le precedenti e sono soggette a cambiamenti senza alcun preavviso.

On applique les présentes conditions générales de vente à toutes les commandes qui nous parviennent après la publication de ce catalogue. Ces conditions sont sujettes à changement sans aucun préavis et, la commande transmise, elles sont considérées comme irrévocables.

1) Prix: On appliquera les prix en vigueur à la date de la livraison.
2) Termes de livraison: Marchandise prise sans délai. Le vendeur a la faculté d'effectuer l'exécution de la commande en plusieurs temps sans que cela donne droit à l'annulation totale ou partielle de la commande.

3) Expédition: Dans le cas où le moyen d'expédition n'a pas été indiqué de façon explicite par le client, l'expédition est effectuée suivant le mode le plus adéquat. La marchandise voyage aux risques et périls de l'acheteur, même si elle est fournie franco.

L'assurance n'opère que si l'acheteur la demande et elle est à sa charge.
4) Reclamations: D'éventuelles réclamations doivent être faites dans les trente jours de la date de facturation par lettre recommandée selon les termes du Code Civil. On n'accepte pas de matériel en retour sans l'autorisation préalable de nos fonctionnaires compétents.

5) Emballage: Standard, gratuit. Si des emballages spéciaux sont requis, ils seront débités à l'acheteur à prix de coût.

6) Garantie: Notre matériel est garanti pour les dommages dus à des défauts de construction de matériel ou de fabrication qui sont imputables.
 - La garantie est annulée au cas où:
 - Le délai d'un an est écoulé
 - Le matériel a été employé selon des modes d'emploi différents de ceux qui sont indiqués

- Le matériel a été modifié ou manipulé
 Notre garantie se limite à la substitution des produits défectueux ou à leur réparation à notre fabrique en excluant totalement toute indemnisation ou dédommagement ou reconnaissance des dommages causés par l'emploi inadéquat de nos produits.

7) Paiement: A concordare: traite bancaire, remise, virement bancaire, lettre de crédit, garantie bancaire, contra documenti.
 Le paiement à travers remise directe doit être effectué auprès de notre siège Coltagliano. En cas de paiement retardé on appliquera les intérêts moratoires selon les lois bancaires en cours au moment de la défaillance. Tous les frais relatifs au recouvrement de sommes facturées objet de paiement retardé, ils seront débités au client même.

En ce qui concerne les commandes pour l'étranger le paiement doit être effectué à travers l'ouverture d'un crédit irrévocable. Toute controverse relève du tribunal de Coltagliano.

8) Réserve de propriété: Les produits fournis restent en notre propriété jusqu'à leur paiement total.

9) Produits à la marque: L'acheteur, en ce qui concerne les produits à la marque, est tenu à permettre l'accès des dirigeants de IP S.r.l. pour examens et vérifications de conformité des produits aux règles. Ces conditions générales annulent toutes les précédentes et sont passibles de changement sans aucun préavis.

The general terms of sale herewith included apply to all orders received after the issue of this price list; they are subject to variations without any notice and they will be regarded as accepted in full once the order is placed.

1) Prices: Current prices at delivery date will be applied.
2) Delivery conditions: Early delivery is subject to prior sales; the seller can dispatch the order in successive stages, but this doesn't give the buyer the right to cancel entirely or even partially the order. Goods are sold ex works Coltagliano.

3) Forwarding: when the means of transport is not explicitly indicated by the customer, delivery will be carried out in the most suitable way. Goods will be transported of the customer's own risk, even when they are sent duty free. Insurance is provided only if requested and is charged to the buyer.

L'assicurazione viene coperto solo su richiesta ed a carico del compratore.
4) Complaints: Eventual complaints should be made within 30 days from the date of delivery, sent by a full postage letter in conformity with the civil law. Returned material will not be accepted if not previously authorized by our competent officials.

5) Packing: Standard packing is free. If special packages are requested, the customer will be charged the extra costs.
6) Guarantee: Our material is guaranteed against damages due to material or manufacturing defects which are imputable to us.

The guarantee expires:
 - One year after the delivery
 - If the material is employed out of the operating terms indicated
 - If the material is altered or manipulated.

Our guarantee is limited to the replacement of the faulty products or to their repairing in our head office, and strictly excludes any liability, indemnity or the acknowledgement of damages caused by our products.

7) Payment terms: to be agreed upon: bank draft, bank transfer, irrevocable & confirmed L/C, cash against documents.
 Effectual payments done directly must be undertaken of our own seat in Coltagliano. In case of late payments we will apply penalties according to the current bank laws, starting from the unaccomplished date. In case of delayed payment, all the expenses related to the collection of sums due will be at customer's charge. For overseas supplies, payments should be effected by opening an irrevocable documentary credit.

For any controversy it is convenient to report to the law Courts of Coltagliano.

8) Reserved ownership: Products delivered will remain in our own property until the total payment is settled.

9) Product marked: As regards the products marked IP, the buyer is bound to allow the IP officials to inspect and check the conformity of products to the standards. These general conditions cancel all previous ones and are subject to changes without any previous notice.

Las presentes condiciones se aplican a todos los pedidos recibidos después de la emisión de la presente lista; están sujetas a cambios sin aviso anticipado y se consideran aceptadas integralmente con el otorgamiento del pedido.

1) Precios: Se aplicarán los precios vigentes a la fecha de la entrega.
2) Términos de entrega: Pronto, salvo vendido. Es facultad del vendedor no cumplir con el pedido, aún en repeticiones veces sin que ello dé derecho a la anulación del pedido o de parte del mismo. La mercancía se vende franco de nuestros almacenes de Coltagliano.

3) Envío: Cuando el medio de envío no esté explícitamente indicado por parte del cliente, el envío se hará en la manera más idónea. La mercancía viaja por cuenta y riesgo del comprador; aunque enviada en portes pagados. Seguro sólo a petición y a cargo del comprador.

L'assicurazione viene coperto solo su richiesta ed a carico del compratore.
4) Reclamos: Eventuales reclamos deben ser efectuados dentro de los 30 días a partir de la fecha de la factura mediante carta certificada y en los términos establecidos en el Código Civil. No se admite la devolución de material sin la previa autorización de nuestros Funcionarios competentes.

5) Embalaje: Normal, gratis. Embalajes especiales, si solicitados, serán cargados al coste.
6) Garantía: Nuestro material se entiende garantizado por daños debidos a defectos de construcción del material o de elaboración que nos sean imputables.

La garantía cesará en los casos siguientes:
 - Trascorrido un año a partir de la entrega del material.
 - Cuando el material haya sido utilizado fuera de las condiciones operativas indicadas por nosotros.

- Cuando el material haya sido modificado o manipulado en cualquier manera.
 Nuestra garantía se limita a la sustitución o reparación de los productos defectuosos en nuestra Casa Central con la completa exclusión de cualquier responsabilidad y en particular con la exclusión de indemnizaciones o reconocimiento de daños de cualquier tipo causados por el uso de nuestros productos.

7) Pago: A concordarse: letra de cambio, recibo bancario, contra documentos, transferencia.
 Los pagos por envío directo deben ser efectuados a nuestro Casa de Coltagliano.

Par retraso de pago, serán aplicados intereses moratorios de acuerdo al tipo de interés bancario corriente al momento del incumplimiento. Los gastos de recuperación creditos serán puestos en la cuenta del cliente.
 Para los envíos al extranjero, el pago se efectuará mediante crédito bancario irrevocable.

En caso de cualquier controversia se establece competente el foro de Coltagliano.
8) Reserva de propiedad: Los productos abastecidos quedarán de nuestra propiedad hasta el pago de los mismos.

9) Productos a Marca: El comprador, por cuánto concierne los productos a Marca, es tenido a permitir el acceso de los funcionarios de IP S.r.l. por exámenes y verificaciones de conformidad de los productos a las normas.

Estas condiciones generales anulan todas las precedentes y están sujetas a modificaciones sin preaviso.

You Tube



SINCERT IIP

Divisione di Certificazione per la Qualità
Via S. Maria 100 - 00187 Roma
Tel. +39 06 5015511 - 0044



SINCERT IIP

Divisione di Certificazione per l'Ambiente
Via S. Maria 100 - 00187 Roma
Tel. +39 06 5015511 - 0044



PLASTICA ALFA

Zona Industriale C.de Balchino - P.O. BOX 121- 95041 CALTAGIRONE (CT) Italy
Tel. +39.0933.51973/50175/50159 - FAX +39.0933.53049
e-mail: info@plasticaalfa.it internet: www.plasticaalfa.it

absolutely made in Italy