

ABRAP

Denomination: **HEAVY-DUTY METAL CLAMPS**

Codes: **AB-RI,AB-RE,AB-RA,AB-IA,AB-IR,AB-GA,AB-PE,AB-M8,ABDE,AB-DP,AB-ZI,AB-SA,AB-GP**

Reference: **FT ABRAP-en**

Date: **01/04/19**

Revision: **7**

Page: **9 of 15**

2.7 AB-PE

Sprinkler pipe clamp



Benefits



Coating



Zinc-plated

Base Material



Steel pipes

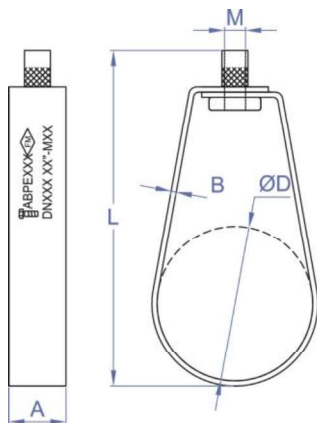


Firefighting pipes

Installation data

Code	Size [mm]	Ø D (mm)	Ø D (")	A x B (mm)	Maximum load recommended (kg)	Length (mm)	M	DN
ABPE028	28	25 - 31	¾"	21 x 1	200	72	M10 (3/8")	DN 20
ABPE035	35	32 - 38	1"	21 x 1	200	78	M10 (3/8")	DN 25
ABPE040	44	41 - 47	1 ¼"	21 x 1,2	200	88	M10 (3/8")	DN 32
ABPE048	50	47 - 53	1 ½"	21 x 1,2	200	95	M10 (3/8")	DN 40
ABPE060	62	59 - 65	2"	21 x 1,2	200	105	M10 (3/8")	DN 50
ABPE075	77	74 - 80	2 1/12"	21 x 1,2	200	125	M10 (3/8")	DN 65
ABPE090	90	87 - 93	3"	21 x 1,2	200	140	M10 (3/8")	DN 80
ABPE100	100	97 - 103	3 ½"	21 x 1,2	200	160	M10 (3/8")	DN 90
ABPE115	115	112 - 118	4"	21 x 2	200	173	M10 (3/8")	DN 100
ABPE140	142	139 - 145	5"	31 x 2	200	209	M12 (1/2")	DN 125
ABPE160	170	167 - 173	6"	31 x 2,25	200	249	M12 (1/2")	DN 150
ABPE220	221	218 - 224	8"	39 x 2,5	200	309	M12 (1/2")	DN 200

DRAWING



Characteristics

- Pipes from DN20 to DN200 mm.
- Surface coating: electrolytic zinc plated, coating >5 microns.
- One piece clamp, without screw, with threaded and knurled screw.
- Nut of M10 or M12 depending on size.
- FM Certificate available.
- Recommended for horizontal and suspended firefighting pipes.
- Easy and quick installation.